

For immediate release

Mitsui Fudosan Co., Ltd.

Mitsui Fudosan Hotel Management Co., Ltd.

**View Central Tokyo From the Sky Lobby and the Outdoor Observatory
Bath on the Top Floor****Mitsui Garden Hotel Gotanda to Open on June 29, 2018**
A Hotel with a Taste of Greenery and Spaciousness in the Center of Tokyo

Tokyo, Japan, June 14, 2017 - Mitsui Fudosan Co., Ltd., a leading global real estate company headquartered in Tokyo, and Mitsui Fudosan Hotel Management Co., Ltd. announced today that they have decided on an opening date of June 29, 2018, for Mitsui Garden Hotel Gotanda, located in Shinagawa-ku, Tokyo.

The hotel is about three minutes on foot from Gotanda Station, and offers direct access to Shinagawa, Shibuya, Shinjuku and Ebisu in addition to being in an ideal location for accessing Tokyo's main tourist spots and Haneda Airport. The hotel can be used as an activity base for tourism and business for a wide array of objectives.

Features of Mitsui Garden Hotel Gotanda**1. Conveniently located for both tourism and business**

Three minutes on foot from Gotanda Station. Good access to Shibuya, Shinagawa, Haneda Airport and Tokyo's main tourist spots, making it an ideal activities base for either tourism or business.

2. Designed under the concept of Sky & Garden Resort to fully enjoy urban views and spaciousness

A relaxing sense of spaciousness has been arranged through gazing at the panoramic views of the skies from the upper floors, the surface of the water in the outdoor observatory bath that flows as if melting into the landscape, and the greenery of the refreshing Garden Terrace.

3. Consideration given to comfortable stays for women

Meticulous attention has been paid to details of comfort for women's stays. The ladies' rooms on the upper floors are equipped with beauty care appliances and cosmetics amenities from POLA Inc., and there are spacious powder rooms.

4. A garden view restaurant surrounded in greenery with authentic Italian cuisine

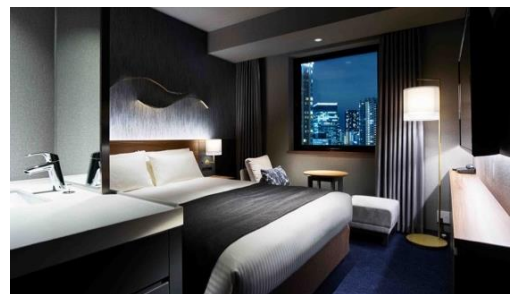
Enjoy authentic Italian cuisine from breakfast through to dinner while surrounded in rich greenery at Tanto Tanto The Gardens, which offers a view of the Garden Terrace.



Exterior view



Panoramic outdoor spa (men's outdoor bath)



Guest room (Superior)

■ Features of Mitsui Garden Hotel Gotanda

1. Conveniently located for both tourism and business

Mitsui Garden Hotel Gotanda is three minutes on foot from JR Gotanda Station. It offers direct access via the JR Yamanote Line to shopping and leisure spots and business districts such as Shinagawa, Shibuya and Shinjuku. Gotanda Station also services the Toei Subway Asakusa Line, offering excellent access to Haneda Airport and, combined with its proximity to Shinagawa Station on the Tokaido Shinkansen, it is convenient for coming and going within Japan and overseas, positioning it as an outstanding location to base a Tokyo stay for tourism and for business.

2. Design concept: Sky & Garden Resort

Decorated with elements of “sky,” “greenery” and “water”

Enjoy a view of the city from the Sky Lobby and the outdoor observatory bath on the upper floors

Guests can get a feel for the spaciousness of the sky and a view of the metropolis from the Sky Lobby and outdoor terrace, which is surrounded in the greenery of trees and plants.

In addition, the outdoor observatory bath (men’s outdoor bath) is a special installation on the top floor where the surface of the water flows as if melting into the landscape. Beyond the water’s surface, guests can view the nightscapes of Shinjuku and Roppongi, allowing them to reset after a long tiring day.

Garden Terrace designed by plant hunter Seijun Nishihata

The greenery of the refreshing Garden Terrace set up around the first floor restaurant was designed and supervised by plant hunter Seijun Nishihata of SORA BOTANICAL GARDEN project Inc. This is a comforting space where various types of plants greet visiting guests, including an olive tree planted as a symbolic tree linking to the Italian restaurant.



Design supervisor: Seijun Nishihata

Born in 1980 in Hyogo Prefecture, he is the CEO of SORA BOTANICAL GARDEN project Inc.

He has traveled throughout Japan and around the world since he was 21, and started his career as a plant hunter to collect plants. He imports and exports over 250 tons of plants every year and delivers to clients in Japan and overseas that include botanical gardens, government organizations, companies, royalty and nobility. In 2012, he established the SORA BOTANICAL GARDEN project to develop people’s minds by planting plants. He has received requests for involvement in various types of projects related to plants from throughout Japan, and had an impact as someone bringing about a revolution in Japanese plant circles.



Sky Lobby



Large common bath (women’s outdoor bath)



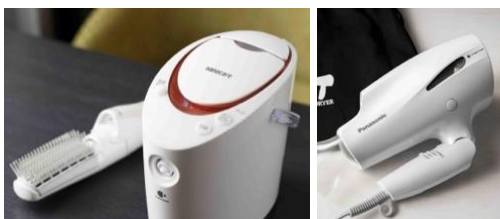
Garden Terrace

3. Consideration given to making stays comfortable for women

Ladies’ rooms have been prepared on the upper floors. These include beauty care appliances from Panasonic Corporation and amenities from POLA cosmetics that are popular among women. The women’s large common bath has a unified tone using bright colors for tiles and walls, while the accompanying powder rooms have been designed to be spacious, with meticulous attention paid to ensure comfort.



Guestroom (Comfort)



Panasonic beauty care household appliances



POLA Cosmetics amenities



Powder room

4. Tanto Tanto The Gardens, garden view restaurant surrounded in greenery with authentic Italian cuisine

Tanto Tanto The Gardens, an Italian restaurant with a view of the Garden Terrace, offers oven-baked pizza and egg-based dishes prepared in an open kitchen as breakfast fare, in addition to bread delivered directly from Bread&Coffee IKEDAYAMA, an enormously popular bakery in the local Gotanda-Ikedayama area.

For lunch and dinner, meticulous attention has been paid to offer filling Italian dishes with a choice selection of ingredients, accompanied by a rich array of fine wines.



Tanto Tanto The Gardens restaurant

Overview of Tanto Tanto The Gardens

Hours of operation	Breakfast 06:30-10:00 (Last entry 09:30) Lunch 11:00-15:30 (Last entry 15:00) Dinner 17:30-23:30 (Last Entry 22:30) Mon-Fri 17:00-23:00 (Last Entry 22:00) Sat, Sun & Holiday
Seating	82 seats, terrace seating available
Breakfast	Western-style buffet: ¥1,800 (tax included)

A Lawson convenience store will also be located on the first floor with 24-hour access.



■ Hotel Overview

Name	Mitsui Garden Hotel Gotanda
Location	2-6 Higashi Gotanda 2-chome, Shinagawa-ku, Tokyo
Tel.	03-3441-3331
Access	Three minutes on foot from JR Gotanda Station East Exit, Gotanda Station Exit A3 on the Toei Subway Asakusa Line and from Gotanda Station on the Tokyu Ikegami Line
Structure	16 floors above ground
No. of rooms	370 rooms
Adjoining facilities	Tanto Tanto The Gardens restaurant (1F) Lawson convenience store (1F), large common bath (16F)

■ Guest Room Composition (Each Guest Room hosts two people)

* Only triple rooms can accommodate three people

Room type	Size	Total number of guest rooms
Moderate (including 1 lady's room)	195.9 ft ² (18.2 m ²)	65 rooms
Comfort (including 9 ladies' rooms)	195.9 ft ² (18.2 m ²)	139 rooms
Moderate double	199.1 ft ² (18.5 m ²)	38 rooms
Superior (including 4 ladies' rooms)	199.1 ft ² (18.5 m ²)	22 rooms
Accessible	265.8 ft ² (24.7 m ²)	1 rooms
Moderate Twin (including 20 triple rooms)	258.3 ft ² (24.0 m ²)	92 rooms
Superior Twin	258.3 ft ² (24.0 m ²)	12 rooms
Deluxe Twin	396.1 ft ² (36.8 m ²)	1 rooms
		Total 370 rooms

■ Map

