

October 18, 2016

For immediate release

Mitsui Fudosan Residential Co., Ltd.

Appearance of a Global Standard Luxury Tower Residence in the Aoyama District
of Minato Ward

PARK COURT AOYAMA THE TOWER (163 units)

Phase 1 Sales Launched on October 15, 2016

Mitsui Fudosan Residential Co., Ltd. (Head Office: Chuo-ku, Tokyo; President and Chief Executive Officer: Kiyotaka Fujibayashi) launched phase 1 sales of PARK COURT AOYAMA THE TOWER, a 26-story ultra-high-rise condominium, on October 15.

■ Phase-1 Sales

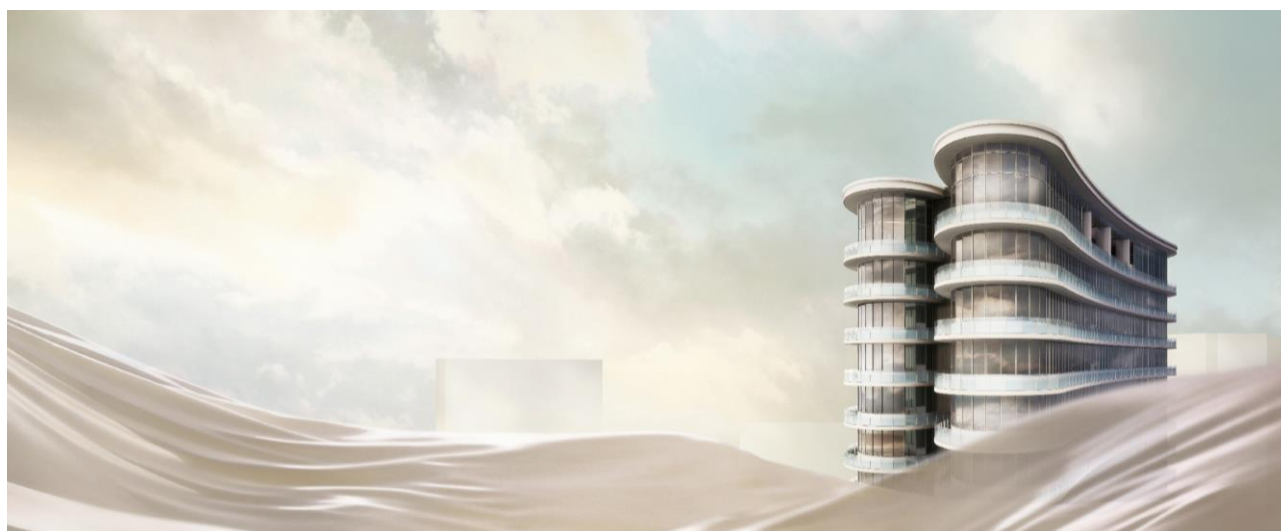
Overview

Registration acceptance	Saturday, October 15 through Sunday, October 23, 2016
Condominiums for sale	55 units
Floor space	70.07 m ² to 234.04 m ²
Sale price	¥178.8 million to ¥1,500.0 million
Floor plans	1LDK to 3LDK

PARK COURT AOYAMA THE TOWER is located in a rare area, surrounded by rich greenery, yet in the center of Tokyo. It is also highly accessible to public transport, being just three minutes on foot from Aoyama-itchōme Station. Famous designers from Japan and overseas who are active globally were invited to take part in designing the condominium to realize various types of luxurious shared facilities exclusively for residents, including the graceful curves of the façade design utilizing high-dimension technology and the infinity pool located on the top floor.

< Main Features of the Project >

- ① Curved and spacious design utilizing high-dimension technology
- ② Shared facilities suitable for a luxury tower residence and thought-out premium services for daily living
- ③ A unique location maximizing views of the expansive greenery of Tokyo's Aoyama and central Tokyo



Computer graphic image of the exterior of PARK COURT AOYAMA THE TOWER

■ Overview of PARK COURT AOYAMA THE TOWER

Location	27-1 and other lots, Minami-Aoyama 2-chome, Minato-ku, Tokyo
Access	Three minutes on foot from Aoyama-itchōme Station on the Tokyo Metro Ginza and Hanzomon lines and the Toei Oedo Line, seven minutes on foot from Nogizaka Station on the Tokyo Metro Chiyoda Line
Site area	3,910.57 m ²
Total floor space	27,787.42 m ²
Structure and scale	Reinforced concrete construction, partial steel-frame construction, 26 floors above ground, 1 floor below ground
Number of units	163 units
Schedule	Start of construction: September 14, 2015
	Completion: Planned for late March 2018
	Move-in: Planned for late April 2018
Vendor and sales agent	Mitsui Fudosan Residential Co., Ltd.
Vendor	Iconique Tokutei Mokuteki Kaisha (special purpose company)*
Design	First Class Registered Architects, Obayashi Corporation
Construction	Obayashi Corporation
Property manager	Mitsui Fudosan Residential Service Co., Ltd.
Official website	www.31aoyama.com

* Iconique is a special purpose company that City Developments Limited established for this project.

<CITY DEVELOPMENTS LIMITED (CDL)>

With a track record of over 50 years, CDL is a Singapore-listed international real estate operating company with a global presence spanning 94 locations in 26 countries. Its diversified portfolio comprises residences, offices, hotels, serviced apartments, integrated developments and shopping malls. In Singapore, CDL has developed over 36,000 luxurious residences and its global pipeline comprises over 4,000 units in China, UK, Japan and Australia. Its London-listed subsidiary Millennium & Copthorne Hotels plc (M&C) has over 120 around the world.

* CDL is not the vendor of PARK COURTAOYAMATHE TOWER and will bear no responsibility as a vendor to buyers of the property through this material or in relation to this material.