

Hotel Decided for TGMM Shibaura Project Hotel Building (tentative name)

French Hotel Chain AccorHotels Brings Japan's First Pullman Hotel

~Hotel Will Be Named Pullman Tokyo Tamachi~

Tokyo, Japan, May 16, 2017—Mitsui Fudosan Co., Ltd. and Mitsubishi Estate Co., Ltd., announced today that they have invited the Pullman brand of upscale hotels from AccorHotels, a global hotel chain headquartered in Paris, France, that primarily develops properties in Europe, to occupy the hotel building of the TGMM Shibaura Project (tentative name), and the hotel will be called the Pullman Tokyo Tamachi.. The companies are currently developing this project with Tokyo Gas Co., Ltd. in the Shibaura area at the east exit of JR Tamachi Station. In addition, the companies announced that the district where the project is located has been named msb Tamachi (musubu Tamachi).

Pullman is the high-class brand of AccorHotels and features innovative, refined design combined with both convenience for business and comfort for leisure. There are currently 117 Pullman hotels in 33 countries around the world, primarily Europe and Asia, but this represents the brand's first hotel opening in Japan.

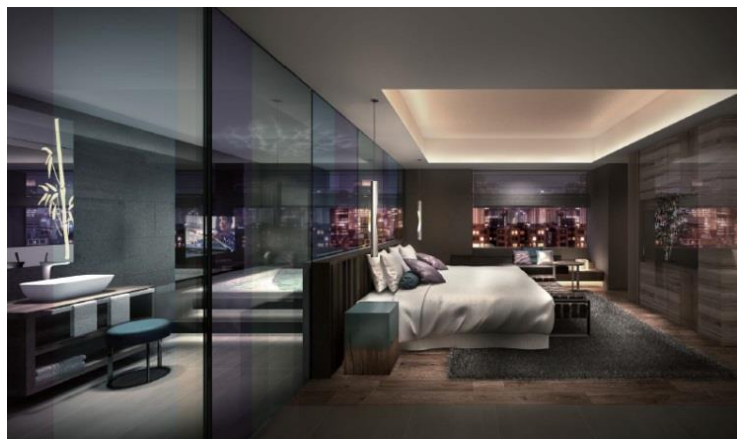
JR Shinagawa New Station is scheduled to open in 2020 and the Hamamatsucho district is also slated for new development, so the Tamachi area is expected to see a new influx of activity going forward. The TGMM Shibaura Project will create a multi-purpose business center with total floor space of some 300,000 m² containing office buildings, commercial facilities, a hotel and other services on an approx. 28,000 m² site owned by Tokyo Gas adjacent to the JR Tamachi Station east exit. Along with high-function office space with cutting-edge specifications, the addition of a high-class Pullman hotel will enable the project to meet not only globalizing business needs but the accommodation needs of increasing numbers of foreign tourists and to further develop the area into one befitting Tokyo's status as an international city.

< Hotel Project Summary >

Structure	9 floors above ground, 2 floors below ground
Hotel Total Floor Area	Approx. 118,403 ft ² (approx. 11,000 m ²)
Guestrooms	143 (planned)
Adjoining facilities	Restaurant, open sky bar, executive lounge, gym, banquet room, etc.
Opening	Fall 2018 (planned)



Exterior image of the hotel



Hotel guestroom image

About AccorHotels

Headquarters: Paris, France

Established: 1967



AccorHotels is one of the world's leading global hotel chains with over 4,100 hotels, resorts and residences in Europe and the rest of the world. With its expert knowledge and extensive experience, AccorHotels conducts hotel operation and investment in 95 countries around the world.

< Brand Portfolio >

○ **Luxury and Upscale Hotel Brands:**

Raffles, Fairmont, Sofitel Legend, SO Sofitel, Sofitel, Onefinestay, MGallery by Sofitel, Pullman, Swissôtel

○ **Midscale and Boutique Hotel Brands:**

25hours Hotels, Novotel, Mercure, Mama Shelter, Adagio

○ **Economy Hotel Brands:**

Jo & JOE, ibis, ibis Styles, ibis budget

○ **Regional Brands:**

Grand Mercure, The Sebel, hotelF1



< AccorHotels' Flagship Hotels >



Sofitel Paris Arc de Triomphe (France)



Raffles (Singapore)

AccorHotels official website www.ACCORHOTELS.com

◆ About Pullman



As an upscale brand of AccorHotels, Pullman provides unprecedented comfort and wellness to world travelers who seek the cutting edge. This high-class brand, which combines innovative design with convenience for business and comfort for leisure, currently has 117 properties in 33 countries around the world.

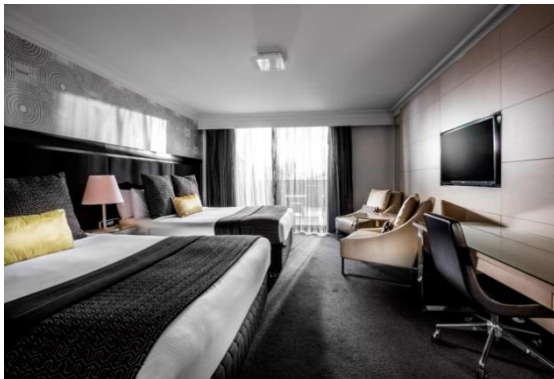
< Pullman Hotels Worldwide >



Pullman Paris
Pullman Paris Tour Eiffel (France)



Pullman Jakarta
Pullman Jakarta Central Park (Indonesia)



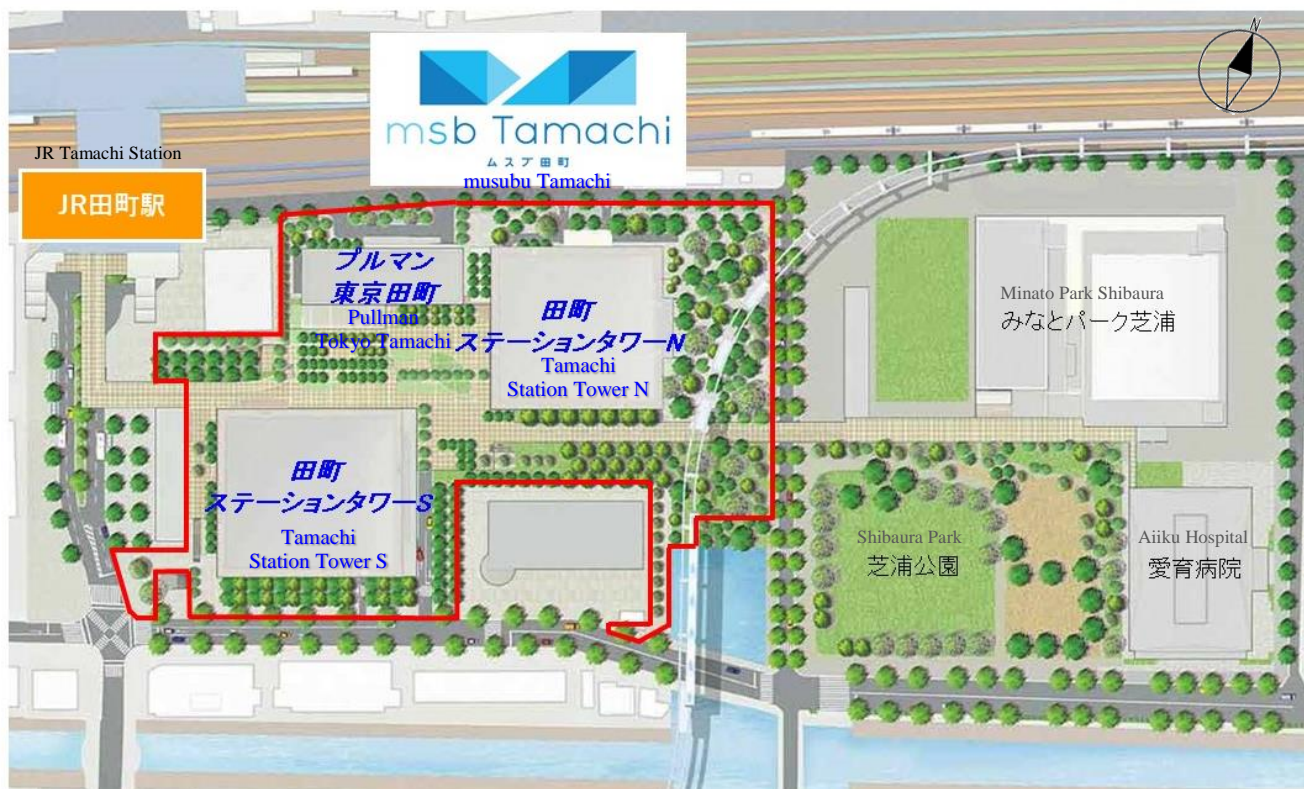
Pullman Brisbane
Pullman Brisbane King George Square (Australia)



Pullman Bangkok
Pullman Bangkok King Power (Thailand)

Pullman brand site www.pullmanhotels.com

[Map]



[Area Map]



[Overview of msb Tamachi (musubu Tamachi)]

Project site	1-20, Tokyo Minato City Shibaura 3-chome and others		
Access	1-minute walk from JR Tamachi Station (direct access from station), 3-minute walk from Mita Station on the Toei Mita and Toei Asakusa subway lines		
Building Name	msb Tamachi Tamachi Station Tower North (including the Smart Energy Center)	msb Tamachi Tamachi Station Tower South	Pullman Tokyo Tamachi
Developer	Tokyo Gas Co., Ltd.	Mitsui Fudosan Co., Ltd., Mitsubishi Estate Co., Ltd. * AccorHotels will operate Pullman Tokyo Tamachi	
Site area	Approx. 147,570 ft ² (approx. 13,710 m ²)	Approx. 125,510 ft ² (approx. 11,660 m ²)	
Floor space	Approx. 1,644,730 ft ² (approx. 152,800 m ²)	Approx. 1,488,650 ft ² (approx. 138,300 m ²)	Approx. 118,400 ft ² (approx. 11,000 m ²)
Scale	36 above ground and 2 below	31 above ground and 2 below	9 above ground and 2 below
Height	Approx. 180 m	Approx. 170 m	Approx. 50 m
Purpose	Offices (4F to 35F) Stores (1F to 2F) District heating/cooling facility (B2) Parking (B1)	Offices (6F to 31F) (Office entrance on the 3rd floor) Stores (1F to 4F) Parking (B1)	Hotel (B2-9F)
Design supervision	Mitsubishi Jisho Sekkei, Inc. and Nikken Inc.		
Exterior design	KPF (Kohn Pedersen Fox Associates)		
Contractor	Undecided (SHIMIZU CORPORATION will build the Smart Energy Center)	Taisei Corporation	
Schedule	Construction start: summer 2017 (planned) Construction completion: spring 2020 (planned) * Work started on the Smart Energy Center alone in October 2015 and is planned for completion in spring 2018	Construction start October 2015 Construction completion: May 2018 (planned) Pullman Tokyo Tamachi opening: Fall 2018 (planned)	