

For immediate release

Mitsui Fudosan Co., Ltd.
Mitsui Fudosan Hotel Management Co., Ltd.

Mitsui Garden Hotel Nihonbashi Premier (264 Rooms) Opening on September 13, 2018 ~ Reservations starting from March 19, 2018 ~

Tokyo, Japan, March 19, 2018 - Mitsui Fudosan Co., Ltd., a leading global real estate company headquartered in Tokyo, and Mitsui Fudosan Hotel Management Co., Ltd. announced today that they have decided on an opening date of Thursday, September 13, 2018 for the Mitsui Garden Hotel Nihonbashi Premier currently under development and located in Nihonbashi Muromachi, Chuo-ku, Tokyo.

The hotel will start accepting reservations from today, Monday, March 19.

Mitsui Fudosan has been contracted to undertake this project by Japan Pulp and Paper Company Limited and will open the hotel within a mixed-use facility named as (tentative name) reconstruction Project of JP Building currently under development.

With direct access to Mitsukoshimae Station on the Tokyo Metro subway lines, JR Shin-Nihonbashi Station and JR Tokyo Station located nearby, the hotel is located with easy access to retail and commercial areas in Ginza, Shibuya and Shinjuku.

Composition of the facility includes a hotel entrance facing Chuo-dori avenue with space connecting to a bustling café on the 1st floor; the hotel's reception, lobby, restaurant and bar on the 9th floor; and guest rooms (264 rooms) on the 10th-15th floors. There are plans for multiple restaurants to open on the building's 1st and basement floors, enabling provision of a comfortable space to spend time at ease not only for hotel guests, but also for all visitors to the Nihonbashi district.

Mitsui Fudosan Hotel Management Co., Ltd. currently operates 5,841 rooms in 23 facilities throughout Japan under Mitsui Garden Hotels, its upper-middle-class limited service hotel brand, and THE CELESTINE HOTELS, its high-class limited service hotel brand.

This hotel will be the 23rd Mitsui Garden Hotel following Mitsui Garden Hotel Otemachi (191 rooms) and Mitsui Garden Hotel Gotanda (370 rooms) which are planned opening in June this year.

Going forward, the Mitsui Fudosan Group will actively continue to engage in new developments in the Tokyo metropolitan area and main regional cities throughout Japan in future.



Mitsui Garden Hotel Nihonbashi Premier (1st floor, 9th-15th floor sections)
(Rendering)

1. Facility Features

(1) Location

Located with direct access to Mitsukoshimae Station on the Tokyo Metro subway lines and JR Shin-Nihonbashi Station and just 10 minutes on foot from JR Tokyo Station, the facility will become a new northern gateway to Nihonbashi.

(2) Facility Overview

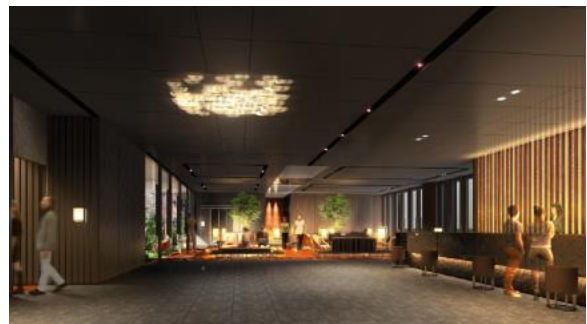
1. A modern hotel design incorporating the stylishness of Nihonbashi

In addition to business-needs of numerous companies located in Nihonbashi, the facility has been designed to be able to feel the stylishness of Nihonbashi, assuming many foreigners will be welcomed as guests, mixing the essence of Nihonbashi as the flowering of Edo culture within a modern design.

Moreover, a Japanese Bath symbolic of Japanese culture exclusively for hotel guests is planned for the lobby floor (9th floor), and provides soothing experiences for guests.



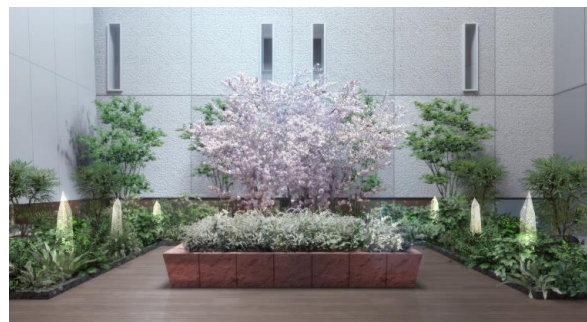
Guest room (Superior twin)



Lobby/lounge



9th floor Japanese bath (large bath)



9th floor Court

2. Authentic Japanese “Ryotei” restaurant Asada in business since 1867, will open up their first branch, in hotel.

In addition to their restaurants in Akasaka, Aoyama and Nagoya, authentic Japanese “Ryotei” restaurant Asada, which has spun legends of Kaga cuisine over a long period since opening in 1867, will open Nihonbashi Asada, which is open in hotel firstly. The is a high-status restaurant and suitable not only for formal business meetings, but also for private meals with important person. Moreover, MATSU, Asada’s first bar, will also open adjacent to the restaurant, which is expressing Japanese mind in an authentic atmosphere. The bar will also have terrace seat where guests can enjoy the wonderful night view.



9th floor Nihonbashi Asada



9th floor Bar MATSU

3. Extensive restaurant facilities to make a bustling neighborhood base

In area adjacent to the hotel entrance on the 1st floor facing to Chuo-dori avenue, BALNIBARBI Co., Ltd., which is known for its track record of operating highly original restaurants and cafes, will open an open-air café which provides a space not only for hotel guests, but also for visitors to Nihonbashi, to spend a luxuriant time as they like.

Moreover, on the building's basement floor, BALNIBARBI also plans to open an authentic Italian restaurant which can be enjoyed casually and a restaurant where guests can play table tennis which is popular in Kuramae, Asakusa.

Furthermore, on the 1st floor along Naka-dori, Delicious-Links, Inc. will open POUND-YA, a popular specialty meat cafeteria that sells meat by the pound.

These restaurants will provide even more bustle to the Nihonbashi area and provide a place for socializing.



1F café

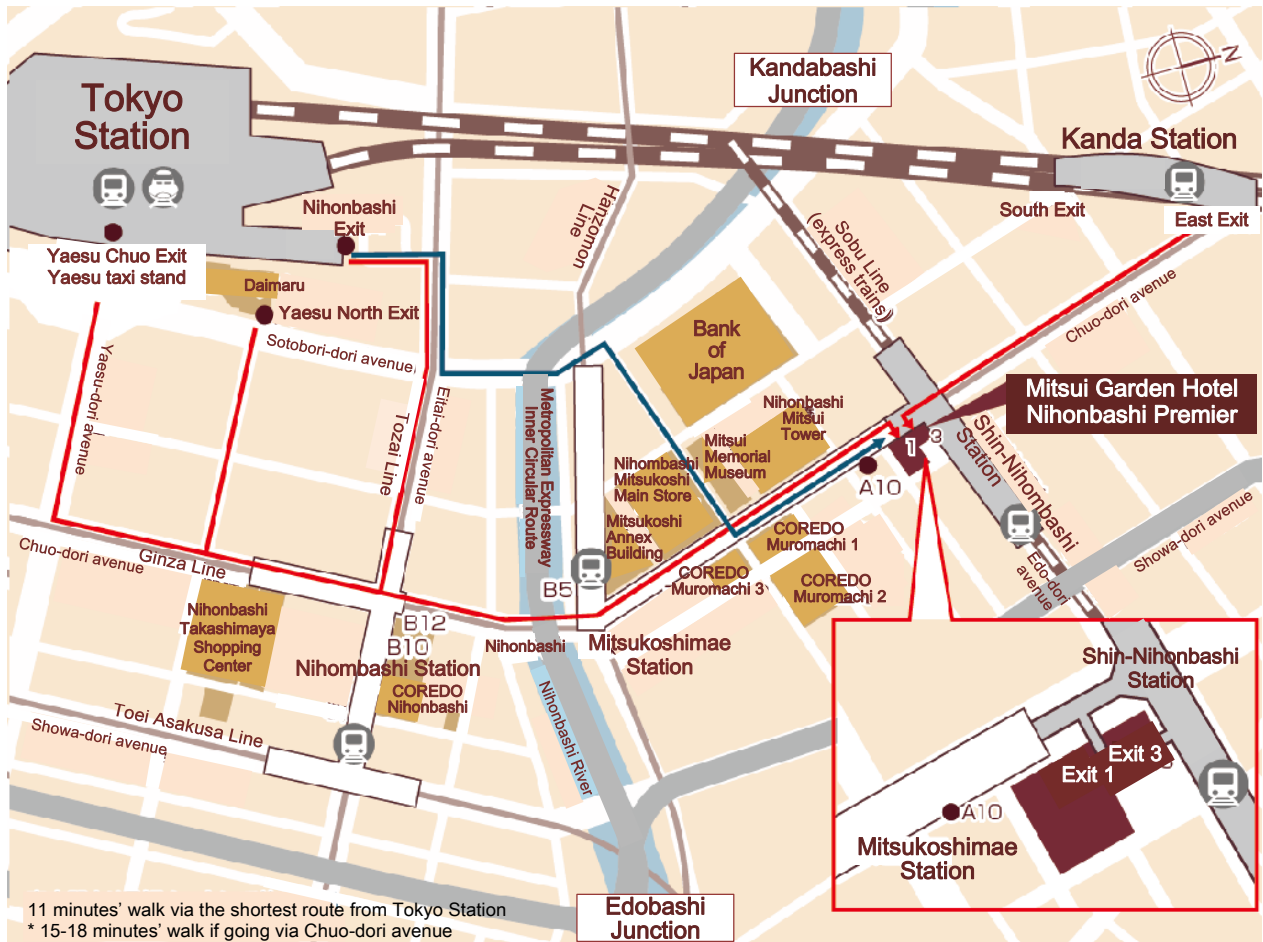
* The digital conceptual image of completion is an image derived as of March 2018. Changes may occur going forward.

(Materials courtesy of Takenaka Corporation/BALNIBARBI)

2. Property Overview

Name of hotel	Mitsui Garden Hotel Nihonbashi Premier
Location	4-4 Muromachi 3-chome, Nihonbashi, Chuo-ku, Tokyo
Facility name	JP Building Project
Tel.	03-3270-1131
Access	11 minutes' walk via the shortest route from the Nihonbashi Exit of JR Tokyo Station Approx. 7 minutes' walk from the East Exit of JR Kanda Station Direct underground access to Mitsukoshimae Station on the Tokyo Metro Ginza and Hanzomon Lines Direct underground access to Shin-Nihonbashi Station on the JR Sobu Line Approx. 8 minutes' walk from exit B12 of Nihombashi Station on the Tokyo Metro Tozai and Toei Asakusa Lines
Guest rooms	264 rooms
Adjoining facilities	Japanese bath (large bath) Restaurant and bar

<Map>



<Reference materials 1> Overview of Restaurants Opening in the Building

ASADAYA IHEI SHOUTEN Co., Ltd.	Opening Overview	Restaurant Nihonbashi Asada (9th floor) Bar MATSU (9th floor)
	Business	Management of authentic Japanese ryotei restaurant
	Location	3-6-4 Akasaka, Minato-ku, Tokyo
	Representative	Shota Asada
	URL	http://www.asadayaihei.co.jp/ (Only in Japanese)
BALNIBARBI Co., Ltd.	Opening Overview	Café (1st floor along Chuo-dori avenue) Restaurant (basement floor) Bar (basement floor) * Names still undecided for both
	Business	Management of restaurant, management and planning of restaurant
	Location	6th floor, Nakazawa Karaki Building, 1-14-26 Minami Horie, Nishi-ku, Osaka
	Representative	Hirohisa Sato
	URL	http://www.balnibarbi.com/ (Only in Japanese)
Delicious-Links, Inc.	Opening Overview	Restaurant POUND-YA (1st floor along Naka-dori avenue)
	Business	Dining (management of restaurant), consulting
	Location	202 Grace Hiroo, 1-1-20 Hiroo, Shibuya-ku, Tokyo
	Representative	Tatsuru Osawa
	URL	http://delicious-links.jp/ (Only in Japanese)