
Largest Regional Shopping Center in the Central Area of Aichi Prefecture
Construction Begins March 1, 2019 on Mitsui Shopping Park LaLaport AICHI TOGO
TOWN (Tentative Name) Planned to Open in Fall 2020

Tokyo, Japan, February 27, 2019 – Mitsui Fudosan Co., Ltd., a leading global real estate company headquartered in Tokyo, announced today that on March 1, 2019, it will begin construction of the regional shopping center Mitsui Shopping Park LaLaport ICHI TOGO TOWN (tentative name). Mitsui Fudosan has been promoting the development in the town of Togo in the Aichi District of Aichi Prefecture. The facility is scheduled to open in fall 2020, and will be the second LaLaport in the three prefectures of the Tokai region after LaLaport NAGOYA minato AQUUS.

The project facility is in an outstanding location with access in all directions from north to south and east to west due to its proximity to national route 153 and prefectural road 57, which are main public roads. The planned facility will have four stories and a total floor area of approx. 2,047,300 ft² (approx. 190,200 m²), with 687,800 ft² (approx. 63,900 m²) for approx. 230 stores. Plans also call for approx. 3,900 parking spaces.

Main Features of the Facility

<Local Community Functions>

The site has established a greenery area covering a total of approximately 43,055 ft² (approx. 4,000 m²), along with setting up an outdoor event space to hold events in collaboration with the local community and forming a transport terminal for public transportation services.

<Commercial Functions>

The facility is to hold a collection of highly topical stores including fashion, miscellaneous goods, dining and entertainment venues with plans to set up comfortable rest areas in each part of the facility. The facility will become a place of enjoyment for a wide variety of generations including families, couples and active seniors.

<Environmental and Disaster Support>

The facility takes environmental and disaster support into consideration, including the establishment of spaces for those stranded away from home by a natural disaster and for electric vehicle recharging stations, as well as employing LED lighting for common areas.

This project site is part of the Togo Central District Land Readjustment Project and will create a bustling area with commercial facilities that contribute to the development of the entire town. This facility will create a commercial environment full of attractions and contribute to a new kind of neighborhood creation under the environmental design concept of a “Town Clubhouse” with a wide variety of stores that people can enjoy in the same place and form a community base to attract many people.



Bird's-eye view



Image of the facility exterior

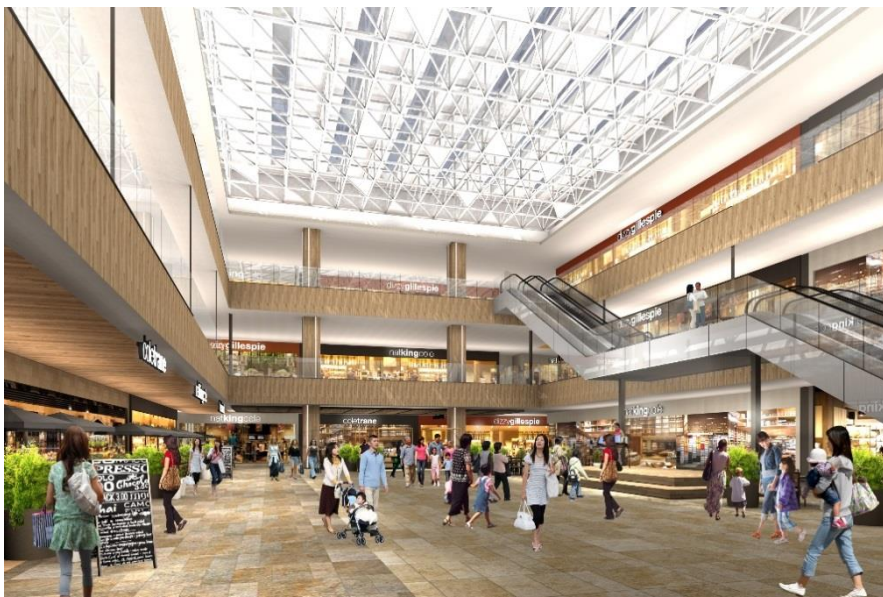


Image of the enter court

<Attachment 1> Overview of Mitsui Shopping Park LaLaport AICHI TOGO TOWN (Tentative Name)

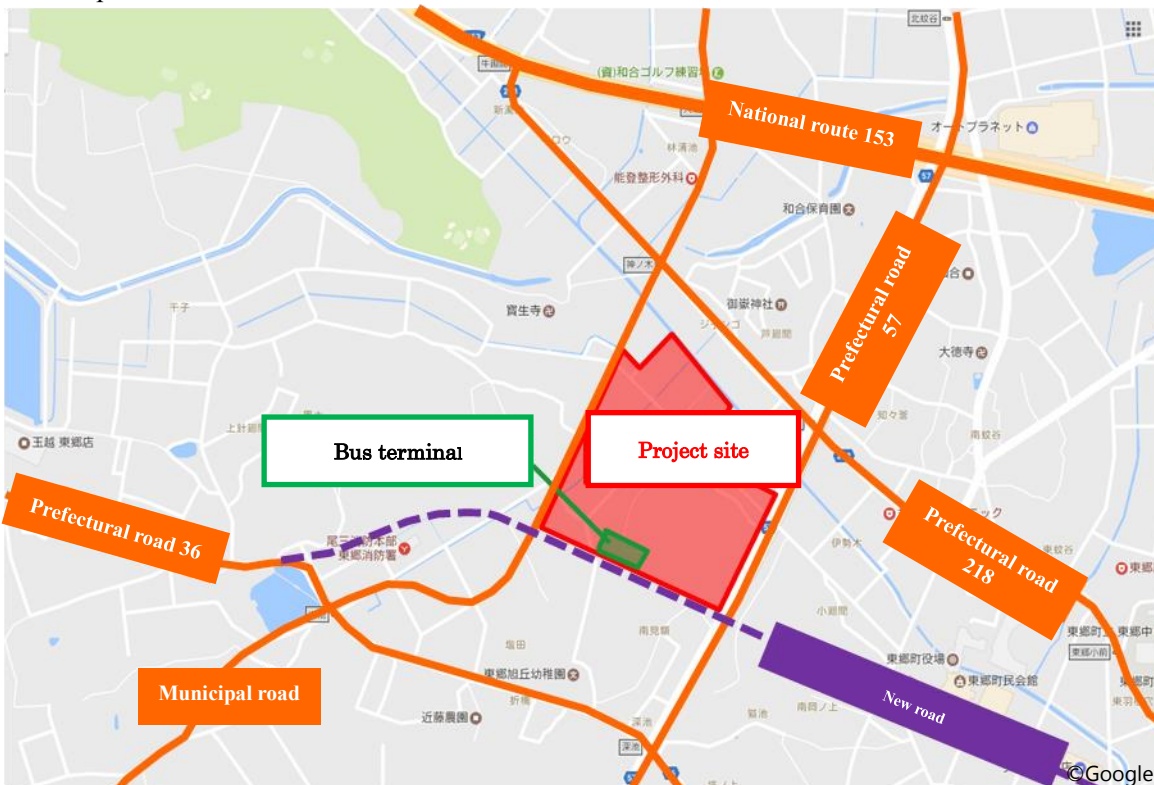
Location	Haruki and others, Togo, Aichi District, Aichi Prefecture (Part of <u>Togo Central District Land Readjustment Project</u>)
Site area	Approx. 957,988 ft ² (approx. 89,000 m ²)
Structure	Commercial facilities building : steel structure, four floors above ground (Commercial facilities: 1st -3rd floors; Parking space: 4th - rooftop floors) Multistory parking buildings : One steel structure, four floors above ground building One steel structure, five floors above ground building Two steel structures, six floors above ground buildings
Total floor area	Approx. 1,179,724 ft ² (approx. 109,600 m ²) Approx. 867,571 ft ² (approx. 80,600 m ²)
Store floor area	Approx. 687,813 ft ² (approx. 63,900 m ²)
Number of stores	Approx. 230
Number of parking spaces	Approx. 3,900
Access	Approx. 2.2 km from Nisshin Station on the Meitetsu Toyota Line
Schedule	Start of construction : March 1, 2019 End of construction and opening: Fall 2020 (planned)
Environmental design	STUDIO TAKU SHIMIZU INC.
Design and construction	Takenaka Corporation

<Attachment 2> Map

【 Map of the surrounding area 】



【 Detailed map 】



Mitsui Fudosan's Regional Shopping Centers (as of February 2019)

Saitama

- Mitsui Shopping Park
LaLaport SHINMISATO
- Mitsui Shopping Park
LaLaport FUJIMI

Shizuoka

- Mitsui Shopping Park
LaLaport IWATA
- Mitsui Shopping Park
LaLaport NUMAZU (tentative name)

Aichi

- Mitsui Shopping Park
LaLaport NAGOYA minato AQUUS
- Mitsui Shopping Park
LaLaport AICHI TOGO TOWN
(tentative name)

Hiroshima

- Mitsui Shopping Park
LaLaport ALPARK

Hyogo

- Mitsui Shopping Park
LaLaport KOSHIEN

Osaka

- Mitsui Shopping Park
LaLaport IZUMI
- Mitsui Shopping Park
LaLaport EXPOCITY

Tokyo

- Mitsui Shopping Park
Urban Dock LaLaport TOYOSU
- DiverCity Tokyo Plaza
- Mitsui Shopping Park
LaLaport TACHIKAWA TACHIHI

Chiba

- Mitsui Shopping Park
LaLaport TOKYO-BAY
- Mitsui Shopping Park
LaLaport KASHIWANOHA

Kanagawa

- Mitsui Shopping Park
LAZONA Kawasaki Plaza
- Mitsui Shopping Park
LaLaport YOKOHAMA
- Mitsui Shopping Park
LaLaport EBINA
- Mitsui Shopping Park
LaLaport SHONAN HIRATSUKA

Overseas

- Mitsui Shopping Park
LaLaport SHANGHAI JINQIAO
(tentative name)
- Mitsui Shopping Park
LaLaport NANGANG (tentative name)
- Mitsui Shopping Park
LaLaport KUALA LUMPUR
(tentative name)

