

For immediate release

Mitsui Fudosan Co., Ltd.
Mitsui Fudosan Hotel Management Co., Ltd.**Hotel in Mitsui Garden Hotels' Premier Series to Open in Close Proximity to the
New National Stadium****Mitsui Garden Hotel Jingugaien Tokyo Premier**

(362 rooms)

Opening Planned for November 22, 2019**Reservations starting from April 9, 2019**

Tokyo, Japan, April 9, 2019 - Mitsui Fudosan Co., Ltd., a leading global real estate company headquartered in Tokyo, and Mitsui Fudosan Hotel Management Co., Ltd. announced today that they have decided to open Mitsui Garden Hotel Jingugaien Tokyo Premier in Kasumigaokamachi, Shinjuku-ku, Tokyo on November 22, 2019 (Friday). The details are as follows.

The hotel will start accepting reservations from today, April 9.

The location of the hotel offers outstanding access to public transport. It is 1 minute on foot from Kokuritsu-Kyogijo Station on the Toei Oedo Line, 5 minutes on foot from Sendagaya Station or 6 minutes on foot from Shinanomachi Station on the JR Chuo-Sobu Line. There are many sports facilities nearby, such as the New National Stadium, which is currently under construction (it is 1 minute on foot from the hotel, with construction scheduled to be completed at the end of November 2019), and the Tokyo Metropolitan Gymnasium. It is also close to the Meiji Memorial Picture Gallery, Jingu Gaien Ginkgo Avenue off Aoyama Street, and the Shinjuku Gyoen National Garden. The hotel is in a prime area of Tokyo where visitors can fully enjoy history, culture and the outdoors.

This hotel will be the third in Mitsui Garden Hotels' Premier Series in Tokyo and fifth in Japan. Guest rooms have been designed to be spacious with an average area of approx. 270 ft² (approx. 25 m²) and each room has a balcony enabling guests to enjoy such garden views as Meiji Jingu Gaien and the Shinjuku Gyoen National Garden. A large bath and fitness gym have been set up on the second floor as common spaces exclusively for guests staying at the hotel, while a multi-purpose room is also available for meetings among athletes or sporting teams staying at the hotel to use nearby sports facilities. Furthermore, a rooftop terrace has been created to enhance use of common spaces and provide comfortable, high-quality spaces and services that meet the needs of guests from within and outside of Japan who are staying for sightseeing, leisure, watching sports or other reasons.

<Hotel Features>

- Outstanding location with multiple sports facilities in the area, including the New National Stadium currently under construction, and surrounded by the greenery of Meiji Jingu Gaien and the Shinjuku Gyoen National Garden
- Modern hotel design in harmony with Meiji Jingu Gaien and ample common spaces
- A modern Italian restaurant, RISTORANTE E'VOLTA, will open on the first floor, equipped with terrace seats providing views of Meiji Jingu Gaien



Exterior (completed perspective)

1. Facility Features

① Modern hotel design in harmony with Meiji Jingu Gaien

This hotel was designed under a concept of “Japanese New Vintage.” Natural materials such as wood and stone have been widely incorporated in the exterior, guest rooms and walls of common spaces, while artworks in the motif of nature found in the Meiji Jingu Gaien area are hung throughout the building, creating a comfortable, high-quality space.

Moreover, all guest rooms have a balcony to enjoy the cityscape, in addition to garden views of Meiji Jingu Gaien and the Shinjuku Gyoen National Garden.

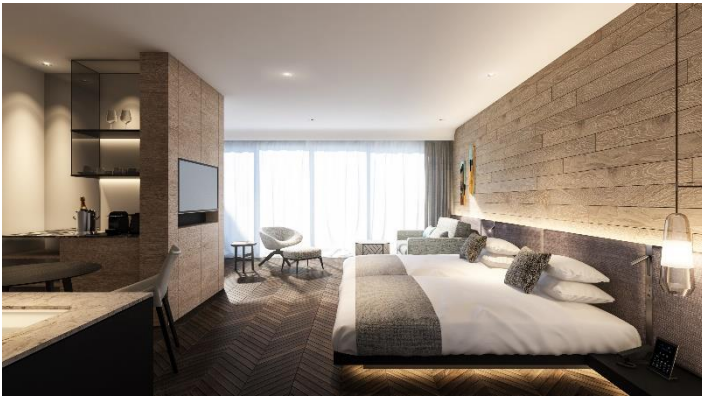


Guest rooms with balconies and views

② Comfortable, high-quality room design and ample common spaces

Guest rooms have been designed to be spacious with an average area of approx. 270 ft² (approx. 25 m²). Each room is capable of hosting at least two guests and there are two penthouse-style rooms (junior suites) with dedicated terraces on the top floor.

The first-floor lobby is an open area with approx. 2,150 ft² (approx. 200 m²) of space receiving natural light. There are also ample common spaces, including a large bath on the second floor, as well as a fitness gym popular in particular with overseas guests, and a multi-purpose room for athletes and sports teams staying at the hotel to use nearby sports facilities.



Junior suite (approx. 540 ft² (approx. 50 m²)/top floor)



Premier twin (approx. 410 ft² (approx. 38 m²))



Large bath



Lobby

③ Italian restaurant with firewood-grilled dishes

RISTORANTE E'VOLTA, operated by RY Corporation Inc., will open on the first floor where the lobby is located, and is a modern Italian restaurant that fuses all food concepts with the esprit of traditional Japanese stylishness while respecting Italian culinary culture and regionality. On the terrace side, large windows of approx. 13 ft (approx. 4 m) by approx. 115 ft (approx. 35 m) will be set up, enabling guests to view scenes of the rich greenery of Meiji Jingu Gaien through the windows while enjoying meals with an ambience of openness and sophistication.



The restaurant as seen from the garden terrace on the hotel's eastern side

For breakfast, the restaurant provides a buffet of over 100 different types of sophisticated Western and Japanese dishes including homemade ham and bacon roasted in a wood oven in an open kitchen and gluten-free smoothies in addition to breads baked with natural yeast at the annexed THE GROVE BAKERY. The restaurant creates a stylish setting to provide ultimate satisfaction to guests from within and outside of Japan.

Lunch comprises dishes grilled in firewood and charcoal grill to maximize seasonal ingredients and a dessert buffet. Dinner, meanwhile, is planned to be a fascinating course cuisine with an array of many small dishes that can be enjoyed by guests who are both staying or just visiting to dine.



Inside the restaurant (an open kitchen with a firewood oven and seating area)

④ Dialogue in the Dark

In Mitsui Garden Hotel Jingugaien Tokyo Premier's tenant zone (on the second floor), Dialogue in the Dark plans to set up a permanent exhibition of social entertainment in darkness.

Dialogue in the Dark has been experienced by more than 210,000 people in Japan, and in this permanent exhibition they will prepare original content related to Meiji Jingu Gaien. The exhibition's program is based on Zen philosophies of mindfulness, and with absolutely no lighting, leaving participants without the use of their eyes. The dark sharpens physical senses and enables a self-dialogue to ponder over inner beauty and readiness for darkness.



2. Property Overview

Name of Hotel	Mitsui Garden Hotel Jingugaien Tokyo Premier
Location	11-3 Kasumigaokamachi, Shinjuku-ku, Tokyo
Access	1 minute on foot from Kokuritsu-Kyogijo Station on the Toei Oedo Line 5 minutes on foot from Sendagaya Station on the JR Chuo-Sobu Line 6 minutes on foot from Shinanomachi Station on the JR Chuo-Sobu Line
Structure	Steel structure and steel-reinforced concrete construction, 13 floors above ground
Number of guest rooms	362
Adjoining facilities	Restaurant, bakery (1st floor) Large bath, fitness gym, lounge (2nd floor) Dialogue in the Dark (2nd floor), rooftop terrace (13th floor)
Tel.:	03-5786-1531
Official website	https://www.gardenhotels.co.jp/jingugaientokyo-premier/eng/

Mitsui Fudosan Hotel Management currently operates a total of 26 facilities and 6,700 rooms across the country, with 23 facilities throughout Japan under Mitsui Garden Hotel, its upper middle-class lodging-focused hotel brand, and 3 facilities under THE CELESTINE HOTELS, its high-class lodging-focused hotel brand.

This hotel will be the 27th under Mitsui Garden Hotels and one in its Premier Series, following the scheduled openings of Mitsui Garden Hotel Fukuoka Gion (300 rooms) on June 27, 2019, Mitsui Garden Hotel Kyoto Station (136 rooms) on August 29, 2019, and Mitsui Garden Hotel Ginza-gochome (338 rooms) on September 26, 2019.

The hotel will be the fifth in Mitsui Garden Hotels' Premier Series following the opening of Mitsui Garden Hotel Nihonbashi Premier (264 rooms) on September 13, 2018.

Going forward, the Mitsui Fudosan Group will actively engage in new developments in the Tokyo metropolitan area and main regional cities throughout Japan.

Reference: Overview of Listed Tenants of the Hotel Building

RY Corporation Inc.	Opening Overview	Restaurant RISTORANTE E'VOLTA Bakery THE GROVE BAKERY
	Business	Restaurant management
	Location	5F Eminence Takanawa, 4-10-63 Takanawa, Minato-ku, Tokyo
	Representative	Fujio Yokoyama
	URL	http://www.ry-corporation.com (Only in Japanese)
Dialogue in the Dark	Opening Overview	Social entertainment in darkness (second floor)
	Business	An exhibition where groups of people enter a space completely void of light and experience various scenes with a guide who is visually disabled and does not rely on sight
	Location	3F The Park Rex Nihonbashibakurocho, 2-7-15 Nihonbashibakurocho, Chuo-ku, Tokyo
	Representative	Shinsuke Shimura
	URL	http://www.dialogue-in-the-dark.com/

Attached materials

1. Map



Map (detailed)



Map of Surrounding Area