

First Mitsui Garden Hotels Premier Series Hotel to Open in the Roppongi Area
Mitsui Garden Hotel Roppongi Tokyo Premier (257 guestrooms)
Grand Opening January 24, 2020
-Reservations open from July 30, 2019-

Tokyo, Japan, July 30, 2019 - Mitsui Fudosan Co., Ltd., a leading global real estate company headquartered in Tokyo, and Mitsui Fudosan Hotel Management Co., Ltd. announced today that they have decided to hold a grand opening for Mitsui Garden Hotel Roppongi Tokyo Premier on January 24, 2020.

Reservations for the hotel will begin from July 30, 2019.

The location of the hotel is not far from large-scale, multi-use facilities such as Tokyo Midtown and Roppongi Hills, and offers outstanding access to public transport being just 5 minutes on foot from Roppongi Station on the Tokyo Metro Hibiya Line and Toei Oedo Line and 7 minutes on foot from Roppongi-itchome Station on the Tokyo Metro Namboku Line.

Roppongi is widely recognized as a business and tourism spot, not only within Japan, but also among inbound tourists, and this hotel will respond to accommodation needs for domestic and overseas customers as a base to stay for business, tourism or leisure.

This Mitsui Garden Hotel Premier Series hotel is the sixth in Japan, and the fourth in the Tokyo metropolitan area. The hotel's spacious guest rooms have been designed to span an average of 290 ft² (approx. 27m²), and all rooms have large windows for guests to enjoy the nightscape of Roppongi. A communal space for overnight guests and a fitness gym have also been installed in response to requests from inbound customers. The highest floor of the facility houses a restaurant and bar where guests can enjoy a view of Tokyo Tower. With these amenities and enhancements to the communal space, Mitsui Fudosan will offer comfortable and high-quality spaces and services to meet the needs of guests from inside and outside Japan who are staying at the hotel for tourism, leisure, or business.

<Mitsui Garden Hotel Roppongi Tokyo Premier Facility Overview>

- In close proximity to Roppongi Station and nearby large-scale multi-use facilities such as Tokyo Midtown and Roppongi Hills, surrounded by the brilliance of Roppongi in an extremely convenient location
- An exterior design that brings color to Roppongi with a modern interior design that expresses the area's charm
- Plans to install terrace seating with a view of Tokyo Tower at the restaurant and bar on the highest floor



Perspective image of the hotel when completed



Perspective view from the hotel when completed

1. Features of Mitsui Garden Hotel Roppongi Tokyo Premier

(1) An exterior and entrance lobby that shine with the brilliance of Roppongi

Jun Mitsui & Associates Inc. Architects has been placed in charge of supervising the exterior design for the hotel and have depicted a bold design for the district of Roppongi.

The exterior, with a parquet and a Japanese motif using origami and folding screens covered in deep shade, is designed to give inbound tourists a sense of Japanese design, with an outward appearance that changes depending on the time or season, and brings color to the streets of Roppongi.



A view looking up at the hotel

Natural light streams into the first-floor entrance lobby and the rich and colorful exterior becomes a space that feels fresh and open with plants, a water basin, and an aqua wall. The interior welcomes guests with subdued staging and a fabric art installation that was created with a special process.



Lobby

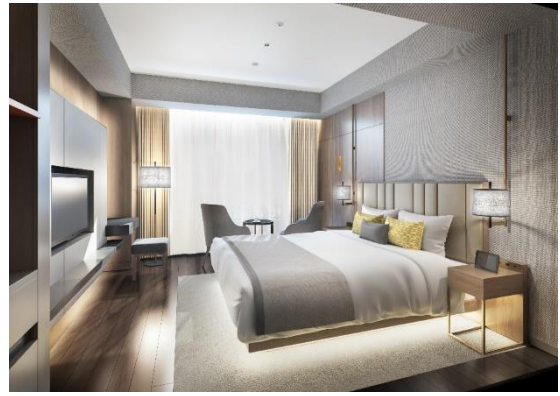
(2) Comfortable, high-quality room design and ample common spaces

The spacious guest rooms are designed to span an average of 290 ft² (approx. 27m²), and every room can accommodate two or more guests, with one junior suite on the highest floor that spans 645 ft² (approx. 60 m²). NOMURA Co., Ltd. was contracted for the interior design of the guest rooms, which were created with glitzy and gorgeous lighting designs reminiscent of Roppongi and lacquer paint and wood textures that bring about a more mature and calming Japanese aesthetic.

A fitness gym with the latest equipment will also be installed inside the hotel for overnight guests only, inviting them to spend their stay in higher quality.



Junior suite (645 ft² (approx. 60 m²))



Superior double (290 ft² (approx. 27 m²))

(3) Restaurant and bar

On the 14th floor, the highest floor of the hotel, there will be a restaurant where guests can view nightscapes of Tokyo, including Tokyo Tower and Roppongi Hills. In the morning, the restaurant will offer a semi-buffet-style breakfast in a comfortable space flooded with natural light. At dinner time, the restaurant will act as a bar where guests can relax while enjoying the nightscape.



View from the restaurant floor

2. Facility Overview

Name	Mitsui Garden Hotel Roppongi Tokyo Premier
Location	3-15-17 Roppongi, Minato-ku, Tokyo 106-0032
Access	5-minute walk from exit 5 of Roppongi Station, Tokyo Metro Hibiya Line/Toei Oedo Line 7-minute walk from Roppongi-itchohome Station, Tokyo Metro Namboku Line
Structure	Steel structure, 14 floors above ground
Guest rooms	257
Adjoining facilities	Fitness (13F) Restaurant and bar (14F)
Phone	(+81) 3-5545-1431
Official website	https://www.gardenhotels.co.jp/roppongi-premier/eng/