

August 21, 2019

For immediate release

Mitsui Fudosan Co., Ltd.

Mitsui Fudosan Hotel Management Co., Ltd.

Fourth Mitsui Garden Hotel 3 Minutes from Central Exit of JR Kyoto Station

Mitsui Garden Hotel Kyoto Station Opening Thursday, August 29

Take in the Spirit of Tea and the Beauty of Kyoto with All Five Senses

Tokyo, Japan, January 10, 2019 - Mitsui Fudosan Co., Ltd., a leading global real estate company headquartered in Tokyo, and Mitsui Fudosan Hotel Management Co., Ltd. announced today that they have decided on an opening date of Thursday, August 29, 2019 for Mitsui Garden Hotel Kyoto Station (136 guestrooms; 848 Higashi-Shiokojicho, Shimogyo-ku, Kyoto City).

The hotel is located with outstanding convenience to public transport, just three minutes on foot from the central exit of JR Kyoto Station, the terminal station for Kyoto and a Shinkansen stop, and very close to Kyoto Ekimae Bus Stop from where buses depart for sightseeing locations throughout Kyoto City. While it goes without saying that the hotel will naturally be an activity base for guests from within and outside of Japan who visit Kyoto for sightseeing, it will also be convenient for business trips using the Shinkansen and meet the accommodation needs of guests visiting Kyoto.

The hotel is designed with the concept of “taking in the spirit of tea and the beauty of Kyoto with all five senses,” and offers spaces imbued with extraordinary hospitality to allow guests to experience Japan’s unique world of tea.

Mitsui Garden Hotel Kyoto Station is the fourth Mitsui Garden Hotel in Kyoto, and a base for the new baggage service offered jointly by the four hotels*, which makes it easy for guests to travel around Kyoto. From the baggage service counter at the hotel, guests can have their bags transported between the hotels, and people using the service are given free access to the hotel’s basement lounge.

<Features of Mitsui Garden Hotel Kyoto Station>

- 1. Conveniently located for stays in Kyoto for sightseeing, leisure or business, just three minutes on foot from Kyoto Station (central exit)**
- 2. Sophisticated spatial design allows guests to experience Japan’s unique world of tea**
- 3. Newly established baggage service counter serves as a base for a collaboration service involving all four Mitsui Garden Hotels (*) in Kyoto City**

*The four hotels are Mitsui Garden Hotel Kyoto Station, Mitsui Garden Hotel Kyoto Shinmachi Bettei, Mitsui Garden Hotel Kyoto Sanjo, and Mitsui Garden Hotel Kyoto Shijo.



Exterior image



Guestroom (Moderate twin)

■Features of Mitsui Garden Hotel Kyoto Station

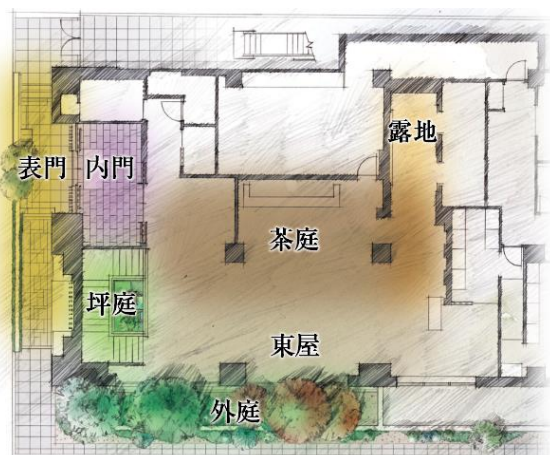
1. Conveniently located for stays in Kyoto for sightseeing, leisure or business

Extremely outstanding location for public transport convenience, being just three minutes on foot from JR Kyoto Station, which naturally makes it great for sightseeing within Kyoto City but also enables traveling by Shinkansen from major cities within Japan, as well as being in close proximity to Kyoto Ekimae Bus Stop. An ideal activity base for guests' various itineraries, whether they be for sightseeing, leisure or business.

2. Sophisticated spatial design allows guests to experience Japan's unique world of tea

(1) Hotel design concept of "Taking in the spirit of tea and the beauty of Kyoto with all five senses"

The lobby, lounge and guest rooms all have a contemporary take on the traditional Japanese tea house, incorporating into their designs elements of cultured Kyoto sophistication to help guests relax and forget the hustle and bustle of the station area. Soft light leads guests from the entrance to the front counter in a way reminiscent of a pathway leading from a tea house's front gate to its garden. The elevator hall and hallways not only function as passageways; they evoke the pathways of gardens that leading to various scenery. The restaurant where guests gather has various lounge-inspired features, including elements from Japanese-style rooms conducive to harmonious, group conversation.

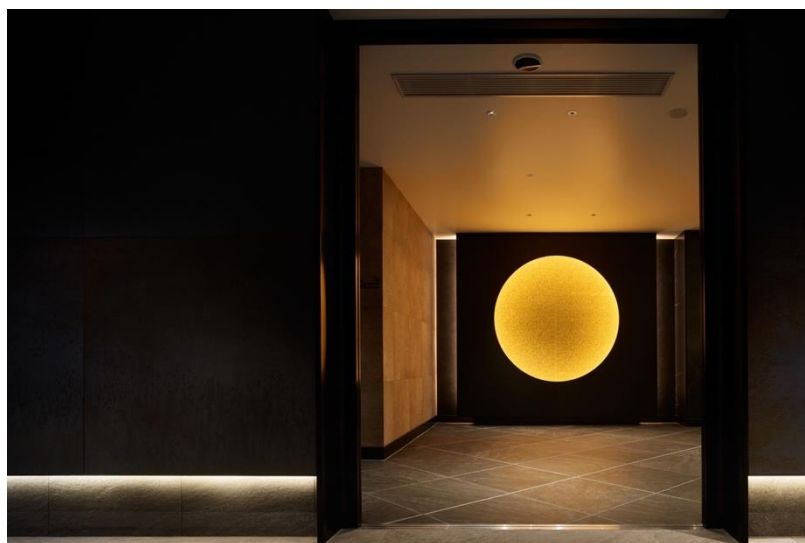


Entrance floor (1st floor)

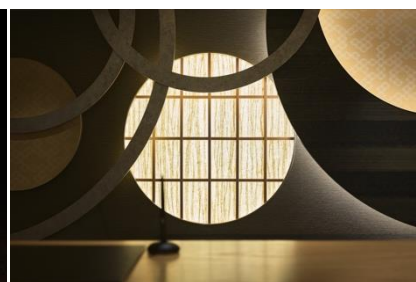


Restaurant floor (Basement)

The enso—a circle painted with a single stroke—which comes out of Zen Buddhism, is one of the design elements that appears throughout the hotel, chosen out of a desire to tie together the various bonds that originate from it. Enso appear at the entrance and in the lounge, elevator hall and guest rooms.



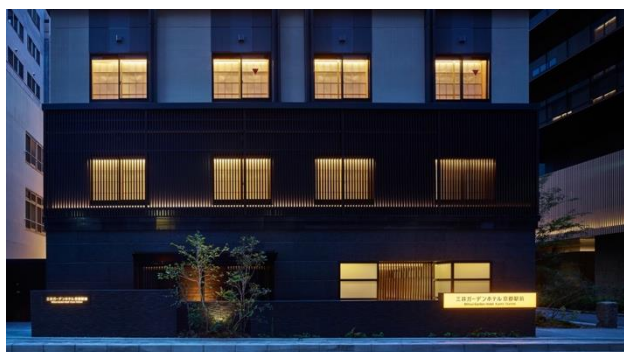
Entrance



Reception desk

(2) Exterior

Combining various expressions of Kyoto's sophisticated aesthetic—tradition, culture, materials, light and more—the exterior creates an elegant, modern version of Kyoto. The perimeter of the hotel is planted primarily with deciduous shrubs and trees—cherries, azaleas and maples among them—while evergreen trees and bushes like camellias and rhododendrons as well as natural stones in the style of a tea house garden can be seen from the lobby.



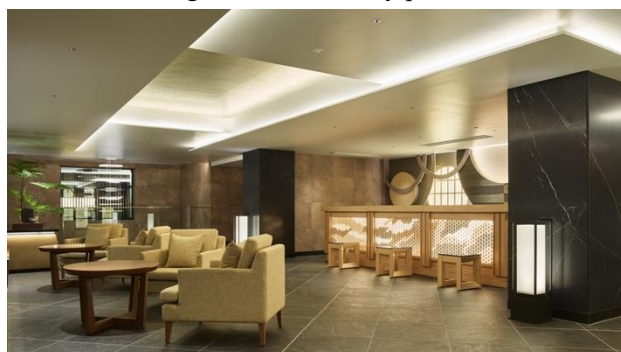
Exterior image



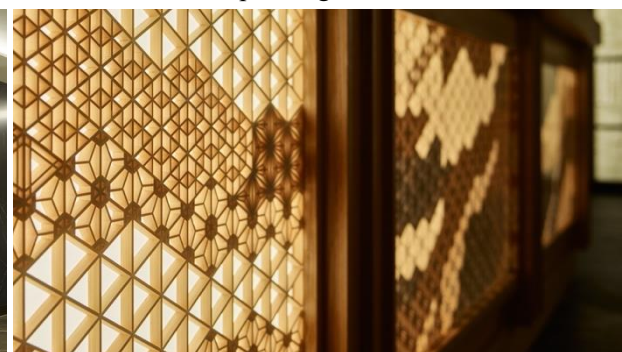
The perimeter of the hotel

(3) Entrance, front counter and lobby

Guests are led from the entrance to the front counter by soft light from paper lanterns in a way reminiscent of a traditional front gate. The front counter and lobby itself remind one of a tea house garden, as guests are greeted with tranquility that dissolves the hustle and bustle of the station. The front counter incorporates traditional kumiko craftsmanship, and the lobby has a flower stand of light that beautifully pairs the traditional tea kettle with fresh plantings.



Front lobby



Front counter

(4) Restaurant and guest lounge

The restaurant and guest lounge in the basement have various areas to suit the tastes, and ways of unwinding, of various guests, including raised tatami mats, low tables over openings, box seat and counter space near the windows.

The breakfast buffet offers Kyoto-style cooking supervised by a registered dietician, heavy on Kyoto vegetables and good for the body. The buffet has an extensive variety of dishes, from grilled fish personally selected by the chef and shipped in direct, to omelets that use *Ryu no Tamago* brand eggs with healthy rice and a Japanese-style yuba sauce, to a menu with Kyoto's famous green tea and matcha. The food is served in traditional Japanese dishware for a breakfast that can be enjoyed with all five senses.

After breakfast, the restaurant functions as a guest lounge that can be used free of charge by guests of the hotel and baggage service customers.



Restaurant and Guest Lounge



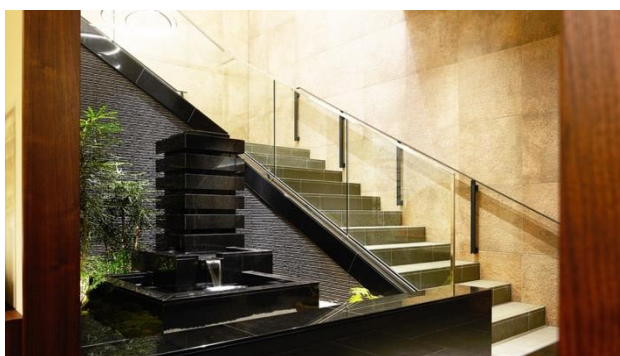
Obanzai Buffet (example)

■ Information on Saki Restaurant and Guest Lounge

Opening hours	Breakfast 06:30-10:00 (last entry 09:30)
	Lounge 12:00-24:00
Seating	Breakfast 56 seats/ Lounge 63 seats
Breakfast	Buffet of Western and Japanese dishes/ 1,800 yen (excluding tax)

(5) Lounge atrium and elevator hall

The lounge is located in the basement, and the stairway leading down from the lobby is designed with an open atrium and a small courtyard garden at the bottom. The elevator hall features the elegance and soft light of rice paper lanterns to create the feeling of a garden pathway. The front of the elevator doors is adorned with enso panels on staggered shelves, as guests can take in art that differs in expression from sunrise to sunset.



Small courtyard garden



Elevator hall

(6) Guest rooms

Two or more people can occupy each of the spacious guestrooms, and the nine triple rooms allow guests to unwind and relax even when travelling with groups or families. All the rooms have desks for business and other uses. The staggered shelves, alcove posts, one-flower vases, and sliding paper windows reminiscent of a traditional tea room create a wonderful wabi-sabi aesthetic, within which the enso of light floating on the screen creates a magical effect.

There are also two special concept rooms. *Kyoto Denim no Ma*, a fusion of Kyo-yuzen (a traditional method for dyeing kimono fabrics) and denim, is a collaborative effort with Kyoto Denim, which applies Kyoto's traditional dyeing techniques to denim fabrics. This room greets guests with a fresh and novel take on Japanese sophistication. The other room, *Tango Chirimen no Ma*, is a collaboration with Tango Chirimen, a leading producer of kimono fabric celebrating 300 years in business in 2020. Designed in partnership with the company's anniversary project committee, the room creates a sense of distinctiveness by taking the basic image of Kyoto to new heights.

(Concept rooms will be offered from Thursday, August 29, 2019 to Monday, August 31, 2020 (tentatively).)



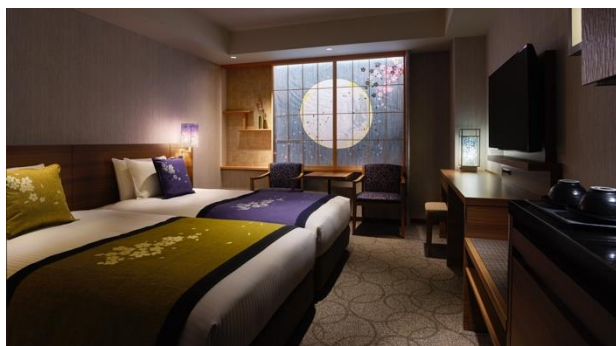
Guest room (moderate double)



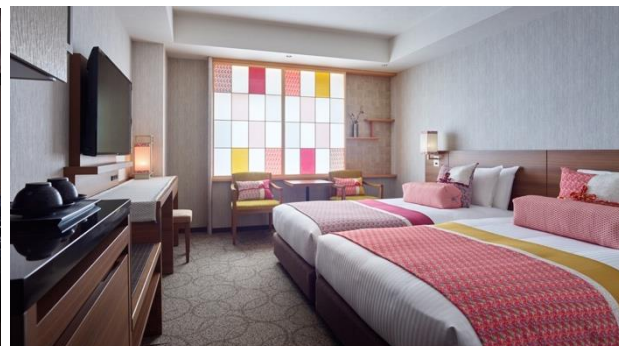
Guest room (triple)



Enso of light



Kyoto Denim no Ma



Tango Chirimen no Ma

3. New Baggage Service Counter

Taking advantage of the new hotel's proximity to Kyoto Station, the entryway to the city for sightseeing and lodging, the four Mitsui Garden Hotels in Kyoto* will be launching a new baggage service. The baggage service counter in the new hotel is the base of operations for the service, which delivers guests' bags between the four hotels. Guests can drop their bags off at the new hotel regardless of which of the four they are staying at. Guests who make use of the baggage service also receive free access to the basement guest lounge.

*The four hotels are Mitsui Garden Hotel Kyoto Station, Mitsui Garden Hotel Kyoto Shinmachi Bettei, Mitsui Garden Hotel Kyoto Sanjo, and Mitsui Garden Hotel Kyoto Shijo.

*Service details are subject to change.

■Facility overview

Name	Mitsui Garden Hotel Kyoto Station
Location	848 Higashi-Shiokojicho, Shimogyo-ku, Kyoto City, Kyoto Prefecture
Access	Approx. three minutes on foot from JR Kyoto Station (central exit)
Scale	Steel structure 10 floors above ground, 1 basement floor
No. of guestrooms	136 rooms
Adjoining facilities	Restaurant/lounge (basement floor)
Tel	075-353-3135
Hotel official website	https://www.gardenhotels.co.jp/kyoto-station/
Note	All rooms are non-smoking (a separate smoking area is available)

■Guest Rooms

Name	Size	Bed	Occupancy	No. of guestrooms
Moderate double	21.0 m ²	1,600×1,960mm	2 persons	36 rooms
Moderate twin	21.7 m ²	1,100×1,960mm	2 persons	90 rooms
Triple	27.9 m ²	1,100×1,960mm	3 persons	9 rooms
Accessible double	21.7m ²	1,600×1,960mm	2 persons	1 room
				Total 136 rooms

■Map

