

February 17, 2020

For immediate release

Mitsui Fudosan Co., Ltd.

Mitsui Fudosan Hotel Management Co., Ltd.

Second Mitsui Garden Hotel in Hokkaido
Mitsui Garden Hotel Sapporo West Opening Thursday, February 20, 2020
Hotel Brimming with Hokkaido Spirit to Make Your Trip Even More Enjoyable

Tokyo, Japan, February 17, 2020—Mitsui Fudosan Co., Ltd., a leading global real estate company headquartered in Tokyo, and Mitsui Fudosan Hotel Management Co., Ltd. announced today the opening of Mitsui Garden Hotel Sapporo West (Address: 6-2-4 Kita-Gojo-Nishi, Chuo-ku, Sapporo; Total guestrooms: 169) on Thursday, February 20, 2020.

The hotel is in a highly convenient location just four minutes' walk from JR Sapporo Station (West Exit) and Sapporo Station on the Sapporo Municipal Subway. Along with nearby Mitsui Garden Hotel Sapporo (opened in 2010), it will serve as an optimal base for activities for guests from Japan and overseas sightseeing in Hokkaido.

From the exterior appearance to the lobby lounge, restaurant and guestrooms, its design incorporates motifs from Hokkaido's traditions, culture and natural environment. Fun artwork is also displayed throughout the hotel, the kind that will make guests stop all of a sudden for pictures.

The hotel has 70 guestrooms that can accommodate up to three guests, and so families with children and small groups can all have enjoyable stays.

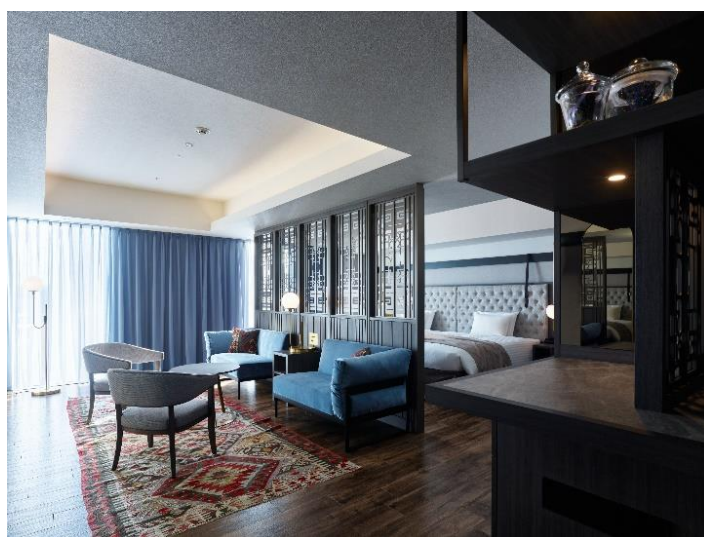
The café-restaurant Sankaku-do will open on the second floor of the hotel. It will serve a buffet-style breakfast made using a host of Hokkaido ingredients. After 12:00 noon, it will shift to a café open to guests and the general public, and a new format of crêpe dishes suitable for adults will be offered by GAKU Inc., which manages risotto and "night parfait" eateries in Hokkaido and Tokyo.

< Features of Mitsui Garden Hotel Sapporo West >

- 1. Highly convenient location for Hokkaido sightseeing**
- 2. Fun accommodations brimming with Hokkaido spirit**
- 3. Sankaku-do café-restaurant for enjoying local Hokkaido food**



Hotel exterior



Guestroom (Junior suite twin)

■ Features of Mitsui Garden Hotel Sapporo West

1. Highly convenient location for Hokkaido sightseeing

The hotel is in a highly convenient location just four minutes' walk from JR Sapporo Station (West Exit) and Sapporo Municipal Subway's Sapporo Station. It is also close to prominent sightseeing spots like the Former Hokkaido Government Office Building, affectionately known as the Red Brick Office, and Akarenga Terrace, with its lineup of famous Hokkaido shops. The location is optimal not only for sightseeing in Sapporo but also for travel around Hokkaido as well.

2. Fun accommodations brimming with Hokkaido spirit

(1) Concept of “a hotel that inspires travel”

“If you visit at the start of your trip, the hotel gets you that much more excited for what's to come. If visiting at the end, the hotel brings back memories of your travels and makes you want to come again.”

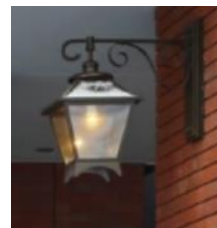
Based on this concept, the hotel strives to be on the first page of guests' albums of fun Hokkaido memories.

(2) Hotel exterior

The building's foundation incorporates brickwork, gas lamps and other design elements long beloved in Hokkaido to greet and see off guests with a dignity and warmth that is a rank above. The upper part of the building is a monotone design contrasting with the foundation, which not only inspires a truly Hokkaido nostalgia but also gives the building a novel, unprecedented look.



Exterior design with brickwork recalling Hokkaido's symbolic buildings



Gas lamps



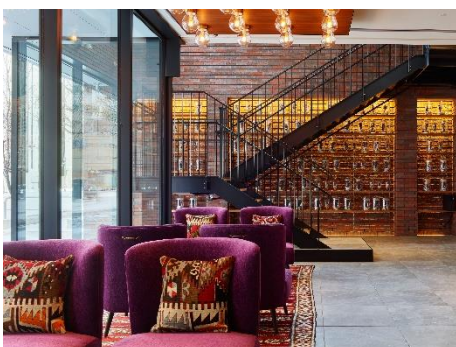
Brickwork



Contrast between the foundation and upper part of the building

(3) Lobby (1F)

Design details evoking Hokkaido's traditions and culture are incorporated into an urban, monotone space to invoke active, positive feelings in guests toward their travels. Trademark Hokkaido elements are used as a motif in various parts of the hotel, including brickwork extending from the exterior, fabric with ethnic prints, ceiling lights featuring blown glass, and sofas that recall lavender plants.



Lobby (1F)



Ceiling lights featuring blown glass



Sofas recalling lavender plants

(4) Guestrooms

The guestrooms feature refined designs that combine industrial materials based on forms, colors and textures from Hokkaido's natural environment. Two designs are used in the rooms, ocean blue and forest green. Exposed beams in the rooms can be used by guests to hang their clothing and accessories with special hooks.

There are a total of 70 guestrooms that accommodate parties of three, so they're optimal for families with children and small groups.

■ Guestroom Composition

Room name	Size	Bed size (mm)	Guest capacity	Guestrooms
Moderate queen	21.9 m ²	1,640×1	2 people	30
Moderate twin	24.3 m ²	1,230×2	2 people	68
Superior twin (with a sofa bed)	26.8 m ²	1,230×2 ^{*1}	3 people	39
Comfort twin (with a sofa bed)	26.8 m ²	1,230×2 ^{*1}	3 people	30
Junior suite twin	60.7 m ²	1,400×2 ^{*2}	4 people	1
Accessible queen	23.7 m ²	1,640×1	2 people	1
				Total 169 rooms

*All guestrooms are non-smoking. (There is a smoking area on the premises.)

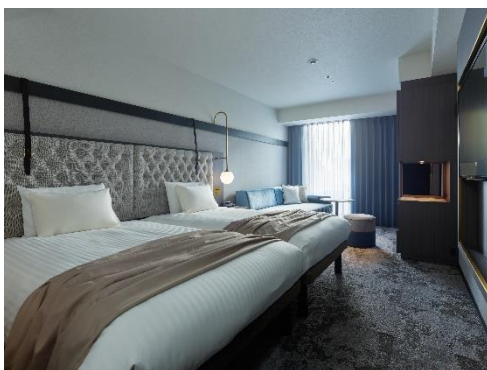
*1 One sofa bed can be added. *2 Two extra beds can be added.



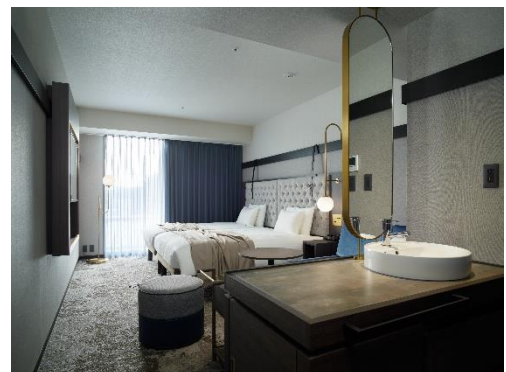
Guestroom (moderate queen)



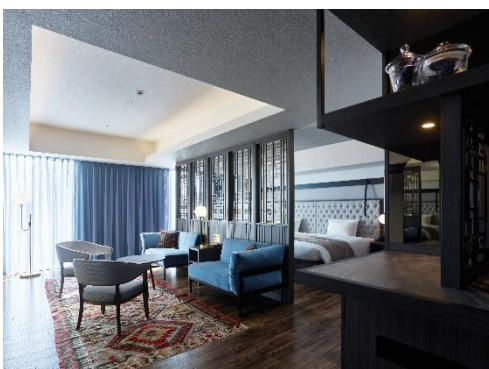
Guestroom (moderate twin)



Guestroom (superior twin)



Guestroom (comfort twin)



Guestroom (junior suite twin)

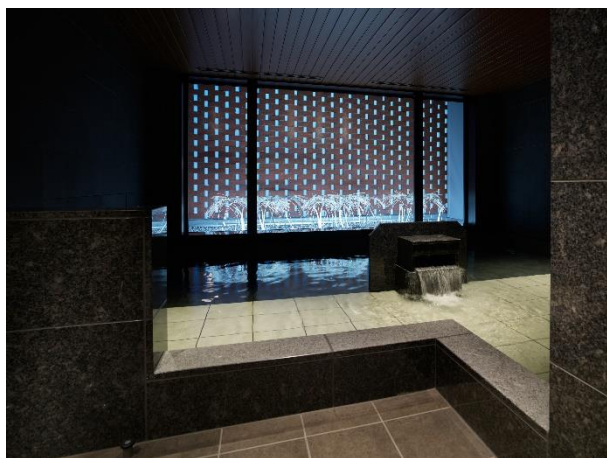


Guestroom (accessible queen)

(5) Large public bath (2F)

The hotel has a large public bath, a popular attraction for tourists visiting Sapporo. The courtyard garden seen from the bath has pampas grass artwork that recreates Sapporo's original landscape for contemporary times, providing guests a relaxing time in a fantastical way.

<Operating hours> 6:00–9:00 & 15:00–25:00 (tentative)



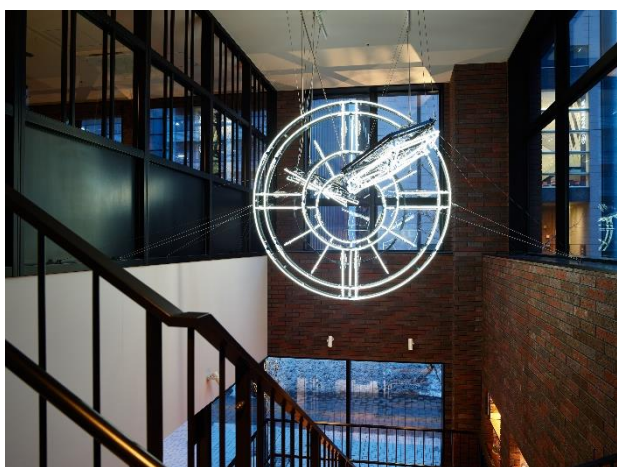
Large public bath



Weather vane

(6) Artworks

Fun works of art embodying the hotel's concept will be located throughout the building. It is hoped that guests will take pictures with the art and put the hotel on the first page of their album of fun travel memories.



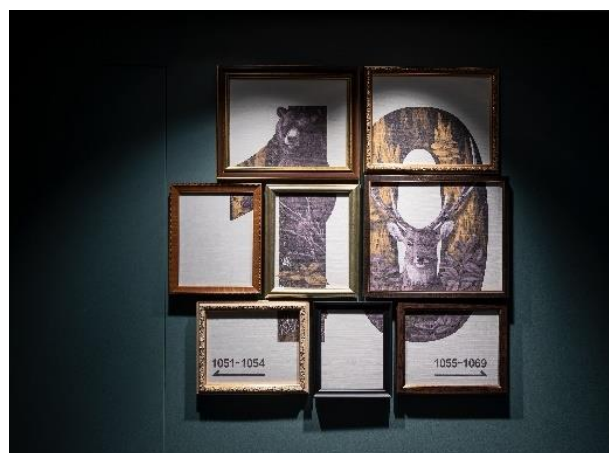
The Light Clock Hand



WOODY BEAR



Room numbers with different designs for each room



Floor numbers with different designs for each floor

3. Sankaku-do café-restaurant for enjoying local Hokkaido food

Sankaku-do, a bright and open café-restaurant, will open on the second floor. A breakfast buffet based on the theme of “everything Hokkaido” will offer Japanese and Western foods made using fresh Hokkaido vegetables, meat and fish. The freshly made crêpes straight from the kitchen are a fun menu item that lets customers choose their preferred grilled ingredients and original sauce. There are also monthly tour events that allow diners to experience cuisine from different regions of Hokkaido.

Starting at noon, the café provides crêpe dishes suitable for adults produced by GAKU Inc., which manages local “night parfait” eateries in Sapporo. The café-restaurant Sankaku-do is open to the general public as well.

GAKU Inc.

GAKU Inc. manages multiple risotto and parfait eateries in Hokkaido locally and in Tokyo.

With their cute and delicious menu items, the eateries gained popularity on social media like Instagram and are strongly supported by women in particular.

The company opened the parfait restaurant Momobukuro, its second establishment in Tokyo, in Ikebukuro in June 2019.

Company Profile

Representative:	Representative Director Gaku Hashimoto
Founded:	August 2006 (first risotto restaurant opened in Sapporo)
Business:	Restaurant management, food and beverage consulting, cooking classes, part-time instruction at vocational schools
Restaurants:	Risotto restaurants (Sapporo 3, Asahikawa 1) Parfait restaurants (Sapporo 3, Shibuya 1, Ikebukuro 1)



Representative Director Gaku Hashimoto



Breakfast buffet (rendering)



Café-restaurant (interior)

Opening hours	Breakfast (hotel guests only) 6:30–10:00 (last entry at 9:30) Café 12:00–20:00 (last entry at 19:30)
Seats	84 people
Breakfast	<div> <div> ■Western Hokkaido Chitose ham bacon Grilled vegetable dipping sauce Brick oven baguette Hokkaido Kita Akari gnocchi </div> <div> ■Japanese Hokkaido red rice (with sweetened adzuki beans) Hokkaido scallop rice cakes Monthly Hokkaido specialties (Red crab miso soup, an Okhotsk specialty) Other </div> </div>
Note	All seating is non-smoking

■ Facility Overview

Name	Mitsui Garden Hotel Sapporo West
Location	6-2-4, Kita-Gojo-Nishi, Chuo-ku, Sapporo, Hokkaido
Access	4 minutes' walk from JR Sapporo Station (West Exit) 4 minutes' walk from Sapporo Station on the Sapporo Municipal Subway
Size	13 aboveground floors, steel-reinforced concrete
Guestrooms	169 rooms
Attached facilities	Public bath (2F), café-restaurant (2F)
TEL	011-218-2231
Official website	https://www.gardenhotels.co.jp/sapporo-west/
Note	All guestrooms are non-smoking. (There is a smoking area on the premises.)

■ Map

