

February 25, 2021

For immediate release

Mitsui Fudosan Co., Ltd.
Mitsui Fudosan Hotel Management Co., Ltd.

**Start of a New Hotel × Home Subscription Service with Over 30 Facilities across Japan
Two Types of Monthly Flat Rate Plans Sales Launch of the “Hotel Anywhere Pass” and “Hotel Resident Pass”**

Tokyo, Japan, February 25, 2021 — Mitsui Fudosan Co., Ltd., a leading global real estate company headquartered in Tokyo, and Mitsui Fudosan Hotel Management Co., Ltd. announced today they will start offering the Hotel Subscription Plan, a new “home and lifestyle” proposal using hotels with a choice of two subscription services. The companies started the services after focusing on the drastic lifestyle changes brought about by the COVID-19 pandemic, drawing attention to the advance of teleworking, “workcations” and other matters.

The recently launched Hotel Subscription Plan is a new service proposing a new style of hotel living utilizing 38 facilities in 12 prefectures throughout Japan under three hotel brands operated by Mitsui Fudosan. The plan offers two choices at a flat rate to enable customers to pick which best matches their lifestyle, with the Hotel Anywhere Pass that makes a reality of a multi-base lifestyle and the Hotel Resident Pass that makes it possible to use hotels like a second home without any need for contracts or initial costs.

■Hotel Anywhere Pass

Service that allows customers to select and use their favorite hotel every day from among any of the Mitsui Garden Hotels or sequence hotels nationwide

■Hotel Resident Pass

Service that allows customers to select their favorite room from among any of THE CELESTINE HOTELS, Mitsui Garden Hotels or sequence hotels

Please see the website for details. <https://corp.gardenhotels.co.jp/campaign/subsumu/> (Japanese)

The Mitsui Fudosan Group will continue to provide customers with services to match their lifestyles.

「Hotel Subscription Plan」

Under a concept of **making homes freer, more convenient and happier**, this hotel × home × subscription service proposes giving shape to and realizing the dreams of various customers for a new “home and lifestyle” in hotels

Hotel Anywhere Pass

—Find your home anytime, anywhere in Japan—

A plan recommended for those who want to freely enjoy staying in all sorts of hotels in all sorts of places throughout Japan. (Lottery applications start from February 25)

Customers can **freely choose their preferred hotel every day from 35 facilities in 12 prefectures throughout Japan for a monthly fee of ¥150,000 (30 nights) and a usage fee (¥500 per stay per room for Standard Class and ¥2,000 per stay per room for Upper Class).**

(Sale limited to 100 people selected by lottery)

Hotel Resident Pass

—Make a favorite hotel your home—

A plan recommended for those who want to live without haste in a hotel they like. (Reservations start February 25)

For a **flat rate for 30 nights, it’s possible to choose a preferred room from among 38 facilities in 12 prefectures throughout Japan and start a dream life in a hotel.** (*Tokyo rates for 30 nights start from ¥150,000)

Customers live in a hotel so there are no bothersome contracts or initial costs, and rooms are furnished and cleaned.

* All prices are tax inclusive



Mitsui Garden Hotel Fukuoka Gion



sequence MIYASHITA PARK



HOTEL THE CELESTINE KYOTO GION

Hotel Anywhere Pass

—Find your home anytime, anywhere in Japan—

As a plan enabling a multi-base lifestyle without being tied down to a single base at a time when lifestyles are changing to center around teleworking, we have prepared the Hotel Anywhere Pass enabling use at your disposal every day of a preferred hotel for a flat rate from among 35 Mitsui Garden Hotels and sequence hotels located in 12 prefectures throughout Japan.

- ◆ We have prepared facilities and services with features that vary according to hotel, such as large baths, fitness gyms and lounges exclusively for guests. Use the hotels to match particular objectives or feelings on the day of use. Various types of amenities (such as toothbrushes and shampoo) have also been prepared in each room. And there is unlimited free Wi-Fi.
- ◆ Rooms are also cleaned regularly and towels and bed linens are changed.

Overview of the Hotel Anywhere Pass

- Rates (tax inclusive) Flat rate for 30 nights ¥150,000 + Standard Class usage fee of ¥500 per night per room
Upper Class usage fee of ¥2,000 per night per room
- Start of accommodation Select a date from Saturday, March 20 to Saturday, April 10, 2021.
- Period of use Select 30 nights, 60 nights or 90 nights from the start date of the stay.
- How to apply Sale of this service is limited to 100 people selected by lottery. Only lottery winners can use the service.
(1) Lottery application period: Until 11:59 a.m., Friday, March 5, 2021
(2) Lottery result notification: Lottery winners will be informed by email in sequence by Wednesday, March 10, 2021
- Payment Payment of the flat rate must be paid online in advance, and the usage fee is paid at hotel reception upon check-in

■ Eligible hotels

Standard Class (usage fee ¥500 per night) 25 facilities in total

Tokyo	Mitsui Garden Hotel Otemachi	Ishikawa	Mitsui Garden Hotel Kanazawa
	Mitsui Garden Hotel Kyobashi	Kyoto	Mitsui Garden Hotel Kyoto Sanjo
	Mitsui Garden Hotel Ginza-gochome		Mitsui Garden Hotel Kyoto Shijo
	Mitsui Garden Hotel Shiodome Italia-gai		Mitsui Garden Hotel Kyoto Station
	Mitsui Garden Hotel Ueno		Mitsui Garden Hotel Kyoto Kawaramachi Jokyoji
	Mitsui Garden Hotel Gotanda		sequence KYOTO GOJO
	sequence SUIDOBASHI	Osaka	Mitsui Garden Hotel Osaka Yodoyabashi
Hokkaido	Mitsui Garden Hotel Sapporo	Okayama	Mitsui Garden Hotel Okayama
	Mitsui Garden Hotel Sapporo West	Hiroshima	Mitsui Garden Hotel Hiroshima
Miyagi	Mitsui Garden Hotel Sendai	Fukuoka	Mitsui Garden Hotel Fukuoka Gion
Chiba	Mitsui Garden Hotel Chiba		Mitsui Garden Hotel Fukuoka Nakasu
	Mitsui Garden Hotel Kashiwa-no-ha	Kumamoto	Mitsui Garden Hotel Kumamoto
	Mitsui Garden Hotel PRANA Tokyo Bay		

Upper Class (usage fee ¥2,000 per night) 10 facilities in total

Tokyo	Mitsui Garden Hotel Ginza Premier	Aichi	Mitsui Garden Hotel Nagoya Premier
	Millennium Mitsui Garden Hotel Tokyo	Kyoto	Mitsui Garden Hotel Kyoto Shinmachi Bettei
	Mitsui Garden Hotel Nihonbashi Premier	Osaka	Mitsui Garden Hotel Osaka Premier
	Mitsui Garden Hotel Roppongi Tokyo Premier		
	Mitsui Garden Hotel Jingugaien Tokyo Premier		
	Mitsui Garden Hotel Toyosu BAYSIDE CROSS Tokyo		
	sequence MIYASHITA PARK		

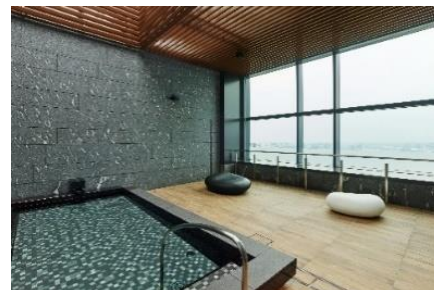
- Cautionary notes
 - No more than one companion may stay free of charge.
 - Operating details for each adjoining facility in hotels may differ from regular operations. For details, please refer to the official website of each facility.
 - This plan is exempt from the Go To Travel campaign.
- Other items Please check the following website for details.
<https://corp.gardenhotels.co.jp/campaign/subsumu/dokodemo/> (Japanese)

Hotel Resident Pass

—Make a favorite hotel for home—

In response to the various needs of customers, such as using a second home as a second base for teleworking, somewhere to stay during a gap created by moving or renovations or to live a dual life in a hotel packed with services and facilities, we have prepared the Hotel Resident Pass that allows customers to choose their favorite room from a preferred hotel from among 38 THE CELESTINE HOTELS, Mitsui Garden Hotels and sequence hotels located in 12 prefectures throughout Japan for a flat rate for 30 nights.

- ◆ We have prepared facilities and services with features that vary according to hotel, such as large baths, fitness gyms and lounges exclusively for guests. Use the hotels to match particular objectives or feelings on the day of use. Various types of amenities (such as toothbrushes and shampoo) have also been prepared in each room. And there is unlimited free Wi-Fi.
- ◆ Rooms are also cleaned regularly and towels and bed linens are changed.
- ◆ No bothersome contract handling charges.
- ◆ No deposits, key money or brokerage fees, keeping initial costs low.



Large public bath at Mitsui Garden Hotel Toyosu BAYSIDE CROSS Tokyo

Overview of the Hotel Resident Pass

- Reservation period Thursday, February 25 to Monday, May 31, 2021
- Reservation method Using the dedicated reservation inquiry form to contact us, please enter the preferred hotel, room type, stay schedule and other details. A response will be provided with vacancy information and room rates.
- Eligible dates for stays Monday, March 1 - Wednesday, June 30 2021.
- Rates (tax inclusive) Flat rate for 30 nights. Additions are charged an additional fee of a flat rate for each night.
Rates differ depending on the hotel and room type. (For reference, Tokyo facility rates for 30 nights start from ¥150,000)
- Payment Lump-sum payment at reception upon check-in

■ Eligible hotels

Tokyo	HOTEL THE CELESTINE GINZA	Chiba	Mitsui Garden Hotel Chiba
	HOTEL THE CELESTINE TOKYO SHIBA		Mitsui Garden Hotel Kashiwa-no-ha
	Mitsui Garden Hotel Ginza Premier		Mitsui Garden Hotel PRANA Tokyo Bay
	Millennium Mitsui Garden Hotel Tokyo	Aichi	Mitsui Garden Hotel Nagoya Premier
	Mitsui Garden Hotel Nihonbashi Premier	Ishikawa	Mitsui Garden Hotel Kanazawa
	Mitsui Garden Hotel Roppongi Premier	Kyoto	HOTEL THE CELESTINE KYOTO GION
	Mitsui Garden Hotel Jingugaien Tokyo Premier		Mitsui Garden Hotel Kyoto Shinmachi Bettei
	Mitsui Garden Hotel Otemachi		Mitsui Garden Hotel Kyoto Sanjo
	Mitsui Garden Hotel Kyobashi		Mitsui Garden Hotel Kyoto Shijo
	Mitsui Garden Hotel Ginza-gochome		Mitsui Garden Hotel Kyoto Station
	Mitsui Garden Hotel Shiodome Italia-gai	Mitsui Garden Hotel Kyoto Kawaramachi Jokyoji	
	Mitsui Garden Hotel Ueno	sequence KYOTO GOJO	
	Mitsui Garden Hotel Toyosu BAYSIDE CROSS	Osaka	Mitsui Garden Hotel Osaka Premier
	Mitsui Garden Hotel Gotanda	Mitsui Garden Hotel Osaka Yodoyabashi	
sequence MIYASHITA PARK	Okayama	Mitsui Garden Hotel Okayama	
sequence SUIDOBASHI	Hiroshima	Mitsui Garden Hotel Hiroshima	
Hokkaido	Mitsui Garden Hotel Sapporo	Fukuoka	Mitsui Garden Hotel Fukuoka Gion
	Mitsui Garden Hotel Sapporo West	Mitsui Garden Hotel Fukuoka Nakasu	
Miyagi	Mitsui Garden Hotel Sendai	Kumamoto	Mitsui Garden Hotel Kumamoto

- Cautionary notes
 - There may be times when it is not possible to use this plan for preferred hotels or rooms due to circumstances such as hotel vacancies.
 - Rooms are cleaned and linens changed once every three days.
 - Operating details for each adjoining facility in hotels may differ from regular operations. For details, please refer to the official website of each facility.
 - This plan is exempt from the Go To Travel campaign.
- Other items Please check the following website for details.
<https://corp.gardenhotels.co.jp/campaign/subsumu/kokodake/> (Japanese)

■ Mitsui Fudosan Group's Contribution to SDGs

https://www.mitsuifudosan.co.jp/corporate/esg_csr/

The Mitsui Fudosan Group aims for a society that enriches both people and the planet under the principles of coexist in harmony with society, link diverse values and achieve a sustainable society, and advances business with an awareness of the environment (E), society (S) and governance (G), thus promoting ESG management. By further accelerating its ESG management, the Group will realize Society 5.0, which the Japanese government has been advocating, and contribute significantly to achieving the SDGs.

* The initiatives covered in this press release contribute to two of the UN's SDGs.

Goal 11: Sustainable Cities and Communities

Goal 17: Partnerships for the Goals

